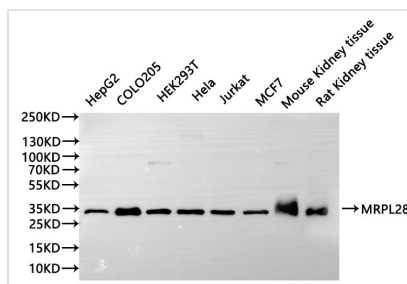




MRPL28 Recombinant Monoclonal Antibody

Product Code	CSB-RA246132A0HU
Storage	Upon receipt, store at -20°C or -80°C. Avoid repeated freeze.
Uniprot No.	Q13084
Immunogen	A synthesized peptide from human MRPL28 protein
Species Reactivity	Human, Mouse, Rat
Tested Applications	ELISA, WB, FC; Recommended dilution: WB:1:500-1:5000, FC:1:50-1:200
Form	Liquid
Conjugate	Non-conjugated
Storage Buffer	Rabbit IgG in 10mM phosphate buffered saline , pH 7.4, 150mM sodium chloride, 0.05% BSA, 0.02% sodium azide and 50% glycerol.
Purification Method	Affinity-chromatography
Isotype	Rabbit IgG
Clonality	Monoclonal
Product Type	Recombinant Antibody
Immunogen Species	Homo sapiens (Human)
Target Names	MRPL28
Clone No.	14B4

Image



Western Blot

, Positive WB detected in: HepG2 whole cell lysate(30µg), COLO205 whole cell lysate(30µg), HEK293T whole cell lysate(30µg), HeLa whole cell lysate(30µg), Jurkat whole cell lysate(30µg), MCF7 whole cell lysate(30µg), Mouse kidney tissue lysate(30µg), Rat kidney tissue lysate(30µg)

All lanes: CtBP2 antibody at 1:1000

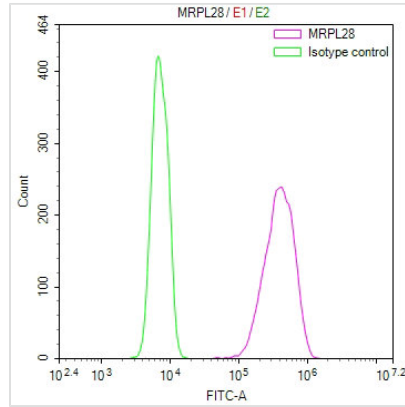
Secondary

Goat polyclonal to rabbit IgG at 1/40000 dilution

Predicted band size: 49 kDa

Observed band size: 49 kDa

Exposure time?10s



Overlay Peak curve showing Hela cells stained with CSB-RA246132A0HU (red line) at 1:100. The cells were fixed in 4% formaldehyde and permeated by 0.2% TritonX-100 for 10min. Then 10% normal goat serum to block non-specific protein-protein interactions followed by the antibody (1ug/1*10⁶cells) for 45min at 4?. The secondary antibody used was FITC-conjugated goat anti-rabbit IgG (H+L) at 1/200 dilution for 35min at 4?. Control antibody (green line) was Rabbit IgG (1ug/1*10⁶cells) used under the same conditions. Acquisition of >10, 000 events was performed.

Usage

For Research Use Only. Not for use in diagnostic or therapeutic procedures.