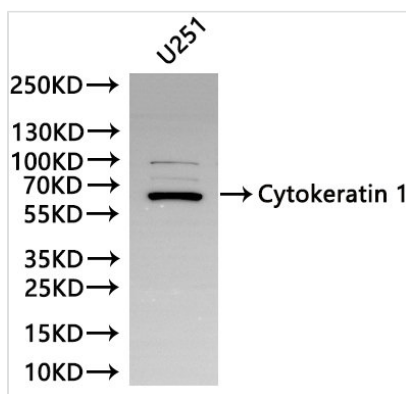




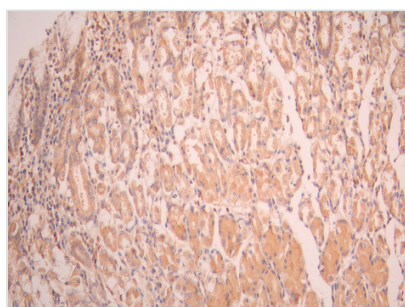
# KRT1 Recombinant Monoclonal Antibody

<b>Product Code</b>	CSB-RA213501A0HU
<b>Storage</b>	Upon receipt, store at -20°C or -80°C. Avoid repeated freeze.
<b>Uniprot No.</b>	P04264
<b>Immunogen</b>	A synthesized peptide from human KRT1 protein
<b>Species Reactivity</b>	Human, Rat
<b>Tested Applications</b>	ELISA, WB, IHC, FC; Recommended dilution: WB:1:500-1:5000, IHC:1:50-1:200, FC:1:50-1:200
<b>Form</b>	Liquid
<b>Conjugate</b>	Non-conjugated
<b>Storage Buffer</b>	Rabbit IgG in 10mM phosphate buffered saline , pH 7.4, 150mM sodium chloride, 0.05% BSA, 0.02% sodium azide and 50% glycerol.
<b>Purification Method</b>	Affinity-chromatography
<b>Isotype</b>	Rabbit IgG
<b>Clonality</b>	Monoclonal
<b>Product Type</b>	Recombinant Antibody
<b>Immunogen Species</b>	Homo sapiens (Human)
<b>Target Names</b>	KRT1
<b>Clone No.</b>	3H7

## Image



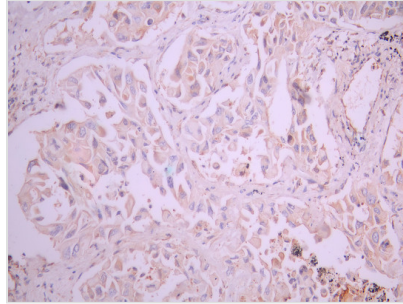
Western Blot  
 , Positive WB detected in:U251 whole cell lysate(30µg)  
 All lanes: Cytokeratin 1 antibody at 1:1000  
 Secondary  
 Goat polyclonal to rabbit IgG at 1/40000 dilution  
 Predicted band size: 66 kDa  
 Observed band size: 66 kDa  
 Exposure time?180s



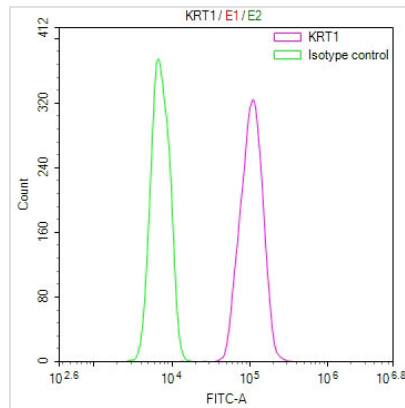
IHC image of CSB-RA213501A0HU diluted at 1:100 and staining in paraffin-embedded human stomach tissue performed on a Leica Bond™ system. After dewaxing and hydration, antigen retrieval was mediated by high pressure in a citrate buffer (pH 6.0). Section was blocked with 10% normal goat serum 30min at RT. Then primary antibody (1% BSA) was incubated at 4°C overnight. The primary is detected by a Goat anti-rabbit polymer IgG labeled by HRP and



visualized using 0.05% DAB.



IHC image of CSB-RA213501A0HU diluted at 1:100 and staining in paraffin-embedded human lung cancer performed on a Leica Bond<sup>TM</sup> system. After dewaxing and hydration, antigen retrieval was mediated by high pressure in a citrate buffer (pH 6.0). Section was blocked with 10% normal goat serum 30min at RT. Then primary antibody (1% BSA) was incubated at 4°C overnight. The primary is detected by a Goat anti-rabbit polymer IgG labeled by HRP and visualized using 0.05% DAB.



Overlay Peak curve showing HeLa cells stained with CSB-RA213501A0HU (red line) at 1:100. The cells were fixed in 4% formaldehyde and permeated by 0.2% TritonX-100 for 10min. Then 10% normal goat serum to block non-specific protein-protein interactions followed by the antibody (1ug/1\*10<sup>6</sup>cells) for 45min at 4?. The secondary antibody used was FITC-conjugated goat anti-rabbit IgG (H+L) at 1/200 dilution for 35min at 4?. Control antibody (green line) was Rabbit IgG (1ug/1\*10<sup>6</sup>cells) used under the same conditions. Acquisition of >10, 000 events was performed.

## Usage

For Research Use Only. Not for use in diagnostic or therapeutic procedures.