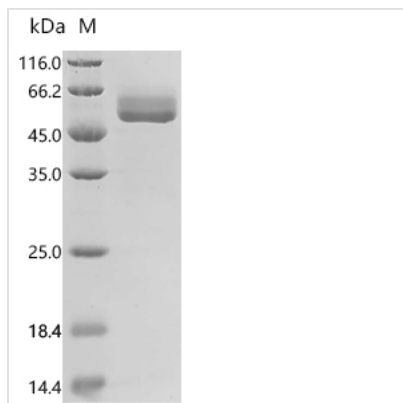


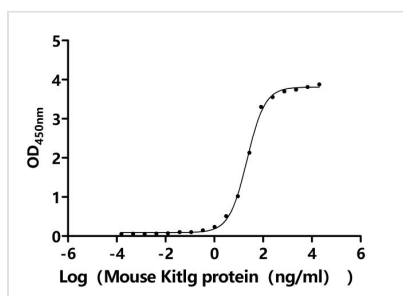


Recombinant Mouse Kit ligand (Kitlg), partial (Active)

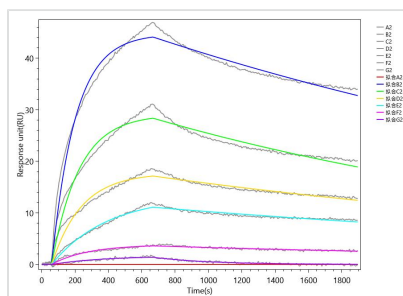
Product Code	CSB-MP012376MO1d9
Abbreviation	Recombinant Mouse Kitlg protein, partial (Active)
Storage	The shelf life is related to many factors, storage state, buffer ingredients, storage temperature and the stability of the protein itself. Generally, the shelf life of liquid form is 6 months at -20°C/-80°C. The shelf life of lyophilized form is 12 months at -20°C/-80°C.
Uniprot No.	P20826
Form	Lyophilized powder
Storage Buffer	Lyophilized from a 0.2 µm sterile filtered PBS, 6% Trehalose, pH 7.4
Product Type	Recombinant Protein
Immunogen Species	Mus musculus (Mouse)
Biological Activity	①Measured by its binding ability in a functional ELISA. Immobilized Mouse Kit (CSB-MP012375MO1) at 2 µg/mL can bind Mouse Kitlg. The EC50 is 19.35-24.80 ng/mL. ②Recombinant Mouse Kitlg captured on Protein A Chip can bind Recombinant Mouse Kit (CSB-MP012375MO1) with an affinity constant of 15.1 nM as detected by MetaSPR Assay (WeSPRTM 200).
Purity	Greater than 95% as determined by SDS-PAGE.
Sequence	KEICGNPVTDNVKDITKLVANLPNDYMITLNYVAGMDVLP SHCWLRDMVIQLSL SLTTLLDKFSNISEGLSNYSIIDKLGKIVDDLVL CMEENAPKNIKESPKRPETRSF TPEEFFSIFNRSIDAFKDFMVASDTSDCVLSSTLGP EKDSRVSVTKPFMLPPVA
Source	Mammalian cell
Target Names	Kitlg
Expression Region	26-189aa
Notes	Repeated freezing and thawing is not recommended. Store working aliquots at 4°C for up to one week.
Tag Info	C-terminal hFc1-tagged
Mol. Weight	47.2 kDa
Protein Length	Partial
Image	



(Tris-Glycine gel) Discontinuous SDS-PAGE (reduced) with 5% enrichment gel and 15% separation gel.



Activity
Measured by its binding ability in a functional ELISA. Immobilized Mouse Kit (CSB-MP012375MO1) at 2 µg/ml can bind Mouse Kitlg. The EC₅₀ is 19.35-24.80 ng/mL.



Activity
Recombinant Mouse Kitlg captured on Protein A Chip can bind Recombinant Mouse Kit (CSB-MP012375MO1) with an affinity constant of 15.1 nM as detected by MetaSPR Assay (WeSPRTM 200).

Endotoxin

Less than 1.0 EU/ug as determined by LAL method.

Reconstitution

We recommend that this vial be briefly centrifuged prior to opening to bring the contents to the bottom. Please reconstitute protein in deionized sterile water to a concentration of 0.1-1.0 mg/mL. We recommend to add 5-50% of glycerol (final concentration) and aliquot for long-term storage at -20°C/-80°C. Our default final concentration of glycerol is 50%. Customers could use it as reference.

Shelf Life

The shelf life is related to many factors, storage state, buffer ingredients, storage temperature and the stability of the protein itself. Generally, the shelf life of liquid form is 6 months at -20°C/-80°C. The shelf life of lyophilized form is 12 months at -20°C/-80°C.