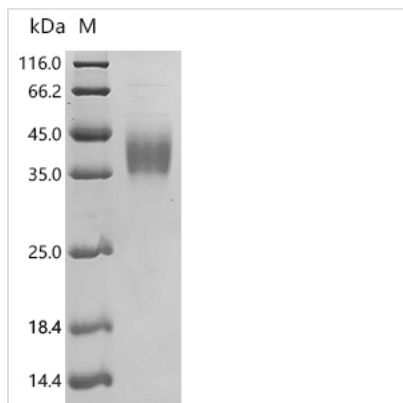


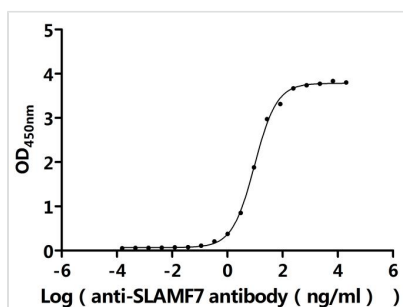


Recombinant Human SLAM family member 7 (SLAMF7), partial (Active)

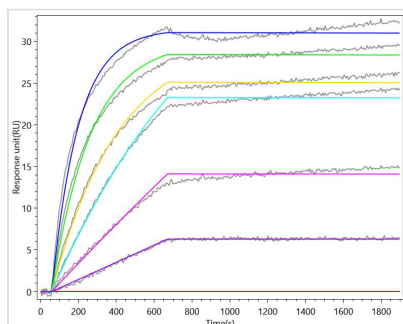
Product Code	CSB-MP021369HU
Abbreviation	Recombinant Human SLAMF7 protein, partial (Active)
Storage	The shelf life is related to many factors, storage state, buffer ingredients, storage temperature and the stability of the protein itself. Generally, the shelf life of liquid form is 6 months at -20°C/-80°C. The shelf life of lyophilized form is 12 months at -20°C/-80°C.
Uniprot No.	Q9NQ25
Form	Lyophilized powder
Storage Buffer	Lyophilized from a 0.2 µm sterile filtered PBS, 6% Trehalose, pH 7.4
Product Type	Recombinant Protein
Immunogen Species	Homo sapiens (Human)
Biological Activity	①Measured by its binding ability in a functional ELISA.Immobilized Human SLAMF7 at 2 µg/mL can bind anti-SLAMF7 recombinant antibody(CSB-RA021369MA1HU).The EC50 is 8.949-10.33 ng/mL. ②SLAMF7 Recombinant Monoclonal Antibody(CSB-RA021369MA1HU) captured on Protein A Chip can bind Human SLAMF7 with an affinity constant of 0.18 nM as detected by MetaSPR Assay (WeSPRTM 200).
Purity	Greater than 95% as determined by SDS-PAGE. Greater than 95% as determined by SEC-HPLC.
Sequence	SGPVKELVGSVGGAVTFPLKSKVKQVDSIVWTFNTTPLVTIQPEGGTIIVTQNR NRERVDFFPDGGYSLKLSKLNKNDSGIYYVGIYSSSLQQPSTQEYVLHVYEHLS KPKVTMGLQSNKNGTCVTNLTCCMEHGEEVDVIYTWKALGQAANESHNGSILPI SWRWGESDMTFICVARNPVSRNFSSPILARKLCEGAADDPDSSM
Source	Mammalian cell
Target Names	SLAMF7
Expression Region	23-226aa
Notes	Repeated freezing and thawing is not recommended. Store working aliquots at 4°C for up to one week.
Tag Info	C-terminal 10xHis-tagged
Mol. Weight	23.8 kDa
Protein Length	Partial
Image	



(Tris-Glycine gel) Discontinuous SDS-PAGE (reduced) with 5% enrichment gel and 15% separation gel.



Activity
Measured by its binding ability in a functional ELISA. Immobilized Human SLAMF7 at 2 µg/ml can bind anti-SLAMF7 recombinant antibody (CSB-RA021369MA1HU). The EC₅₀ is 8.949-10.33 ng/mL.



Activity
SLAMF7 Recombinant Monoclonal Antibody (CSB-RA021369MA1HU) captured on Protein A Chip can bind Human SLAMF7 with an affinity constant of 0.18 nM as detected by MetaSPR Assay (WeSPR™ 200).



The purity of SLAMF7 was greater than 95% as determined by SEC-HPLC

Endotoxin

Less than 1.0 EU/ug as determined by LAL method.

Reconstitution

We recommend that this vial be briefly centrifuged prior to opening to bring the contents to the bottom. Please reconstitute protein in deionized sterile water to a concentration of 0.1-1.0 mg/mL. We recommend to add 5-50% of glycerol (final concentration) and aliquot for long-term storage at -20°C/-80°C. Our default final concentration of glycerol is 50%. Customers could use it as reference.

Shelf Life

The shelf life is related to many factors, storage state, buffer ingredients, storage temperature and the stability of the protein itself. Generally, the shelf life of liquid form is 6 months at -20°C/-80°C. The shelf life of lyophilized form is 12 months at -20°C/-80°C.