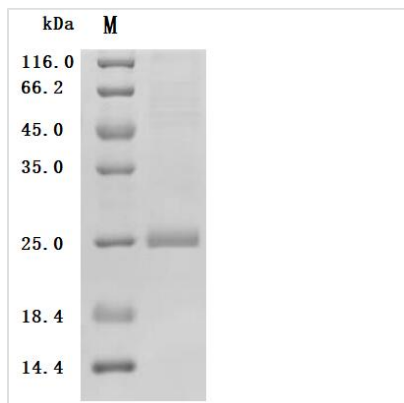


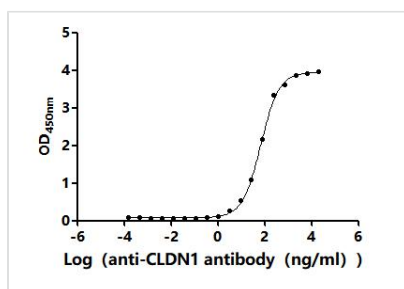


Recombinant Human Claudin-1 (CLDN1)- Detergent (Active)

Product Code	CSB-MP005490HU1-D
Abbreviation	Recombinant Human CLDN1 protein-Detergent (Active)
Storage	The shelf life is related to many factors, storage state, buffer ingredients, storage temperature and the stability of the protein itself. Generally, the shelf life of liquid form is 6 months at -20°C/-80°C. The shelf life of lyophilized form is 12 months at -20°C/-80°C.
Uniprot No.	O95832
Form	Lyophilized powder
Storage Buffer	Lyophilized from a 0.2 µm sterile filtered 50 mM HEPES, 0.15 M NaCl, 0.05% DDM, 0.01% CHS, 6% Trehalose, pH 7.5
Product Type	Recombinant Protein
Immunogen Species	Homo sapiens (Human)
Biological Activity	Measured by its binding ability in a functional ELISA. Immobilized Human CLDN1 at 2 µg/mL on an Nickel Coated plate can bind Anti-CLDN1 recombinant antibody (CSB-RA005490MA1HU). The EC50 is 62.47-72.10 ng/mL.
Purity	Greater than 85% as determined by SDS-PAGE.
Sequence	ANAGLQLLGFILAFILGWIGAIIVSTALPQWRIYSYAGDNIVTAQAMYEGLWMSCV SQSTGQIQCKVFDSLLNLSSTLQATRALMVVGILLGVIAIFVATVGMKCMKCLE DDEVQKMRMAVIGGAIFLLAGLAILVATAWYGNRIVQEFYDPMTPVNARYEFG QALFTGWAAASLCLLGGALLCCSCPRKTTSTYPTPRPYPKAPSSGKDYV
Source	Mammalian cell
Target Names	CLDN1
Expression Region	2-211aa
Notes	Repeated freezing and thawing is not recommended. Store working aliquots at 4°C for up to one week.
Tag Info	N-terminal 10xHis-flag tagged
Mol. Weight	25.1 kDa
Protein Length	Full Length
Image	



(Tris-Glycine gel) Discontinuous SDS-PAGE (reduced) with 5% enrichment gel and 15% separation gel.



Activity
 Measured by its binding ability in a functional ELISA. Immobilized Human CLDN1 at 2 µg/ml on a Nickel Coated plate can bind Anti-CLDN1 recombinant antibody (CSB-RA005490MA1HU). The EC₅₀ is 62.47-72.10 ng/mL.

Endotoxin

Less than 1.0 EU/ug as determined by LAL method.

Reconstitution

We recommend that this vial be briefly centrifuged prior to opening to bring the contents to the bottom. Please reconstitute protein in deionized sterile water to a concentration of 0.1-1.0 mg/mL. We recommend to add 5-50% of glycerol (final concentration) and aliquot for long-term storage at -20°C/-80°C. Our default final concentration of glycerol is 50%. Customers could use it as reference.

Shelf Life

The shelf life is related to many factors, storage state, buffer ingredients, storage temperature and the stability of the protein itself. Generally, the shelf life of liquid form is 6 months at -20°C/-80°C. The shelf life of lyophilized form is 12 months at -20°C/-80°C.