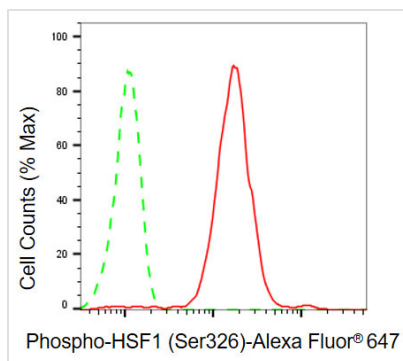




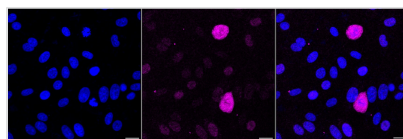
# HSF1 Recombinant Monoclonal Antibody

|                            |   |
|----------------------------|---|
| <b>Product Code</b>        | CSB-RA274430A0HU  |
| <b>Storage</b>             | Upon receipt, store at -20°C or -80°C. Avoid repeated freeze.                                 |
| <b>Uniprot No.</b>         | Q00613  |
| <b>Immunogen</b>           | A synthesized peptide derived from Human HSF1 protein   |
| <b>Species Reactivity</b>  | Human   |
| <b>Tested Applications</b> | ELISA, WB, FC, ICC; Recommended dilution: WB:1:1000-1:5000, FC:1:200-1:2000, ICC:1:100-1:1000 |
| <b>Form</b>                | Liquid  |
| <b>Conjugate</b>           | Non-conjugated  |
| <b>Storage Buffer</b>      | Rabbit IgG in PBS (pH 7.4) containing 50% glycerol, and 0.02% sodium azide.                   |
| <b>Purification Method</b> | Affinity-chromatography   |
| <b>Isotype</b>             | Rabbit IgG  |
| <b>Clonality</b>           | Monoclonal  |
| <b>Product Type</b>        | Recombinant Antibody  |
| <b>Immunogen Species</b>   | Homo sapiens (Human)  |
| <b>Research Area</b>       | Tags & Cell Markers; Epigenetics and Nuclear Signaling; Cardiovascular                        |
| <b>Target Names</b>        | HSF1  |
| <b>Clone No.</b>           | 6F1   |

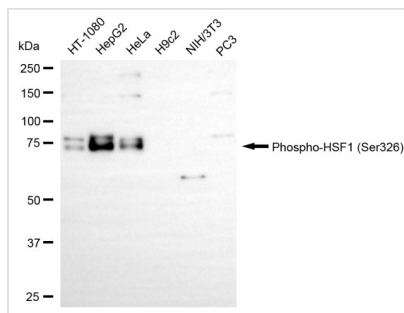
## Image



Flow cytometric analysis of phospho-HSF1 (Ser326) expression in HepG2 cells using phospho-HSF1 (Ser326) antibody. Green, isotype control; red, phospho-HSF1 (Ser326).



Immunocytochemical staining of HepG2 cells with Phospho-HSF1 (Ser326) antibody. Nuclei were stained blue with DAPI; Phospho-HSF1 (Ser326) was stained magenta with Alexa Fluor® 647. Images were taken using Leica stellaris 5. Protein abundance based on laser Intensity and smart gain: Medium. Scale bar, 20 µm.



Western blotting analysis using phospho-HSF1 (Ser326) antibody. Total cell lysates (30  $\mu$ g) from various cell lines were loaded and separated by SDS-PAGE. The blot was incubated with phospho-HSF1 (Ser326) antibody and HRP-conjugated goat anti-rabbit secondary antibody respectively.

## Usage

For Research Use Only. Not for use in diagnostic or therapeutic procedures.