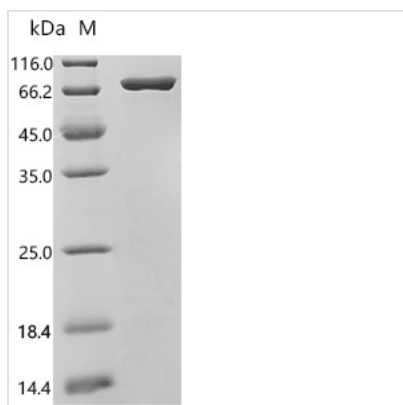




# Recombinant Mouse Proepiregulin (Ereg), partial

|                          |   |
|--------------------------|---|
| <b>Product Code</b>      | CSB-MP730741MOr10   |
| <b>Abbreviation</b>      | Recombinant Mouse Ereg protein, partial   |
| <b>Storage</b>           | The shelf life is related to many factors, storage state, buffer ingredients, storage temperature and the stability of the protein itself. Generally, the shelf life of liquid form is 6 months at -20°C/-80°C. The shelf life of lyophilized form is 12 months at -20°C/-80°C. |
| <b>Uniprot No.</b>       | Q61521  |
| <b>Form</b>              | Liquid or Lyophilized powder  |
| <b>Storage Buffer</b>    | If the delivery form is liquid, the default storage buffer is Tris/PBS-based buffer, 5%-50% glycerol. If the delivery form is lyophilized powder, the buffer before lyophilization is Tris/PBS-based buffer, 6% Trehalose, pH 8.0.  |
| <b>Product Type</b>      | Recombinant Protein   |
| <b>Immunogen Species</b> | Mus musculus (Mouse)  |
| <b>Sensitivity</b>       | Not Test  |
| <b>Purity</b>            | Greater than 95% as determined by SDS-PAGE.<br>Greater than 90% as determined by SEC-HPLC.  |
| <b>Sequence</b>          | VQITKCSSDMDGYCLHGQCIYLVDMREKFCRCEVGYTGLRCEHFFL  |
| <b>Research Area</b>     | Others  |
| <b>Source</b>            | Mammalian cell  |
| <b>Target Names</b>      | Ereg  |
| <b>Expression Region</b> | 56-101aa  |
| <b>Tag Info</b>          | C-terminal 10xHis-HSA-tagged  |
| <b>Mol. Weight</b>       | 73.5 kDa  |
| <b>Protein Length</b>    | Partial   |

## Image



(Tris-Glycine gel) Discontinuous SDS-PAGE (reduced) with 5% enrichment gel and 15% separation gel.



The purity of Ereg was greater than 90% as



determined by SEC-HPLC

---

**Reconstitution**

We recommend that this vial be briefly centrifuged prior to opening to bring the contents to the bottom. Please reconstitute protein in deionized sterile water to a concentration of 0.1-1.0 mg/mL. We recommend to add 5-50% of glycerol (final concentration) and aliquot for long-term storage at -20°C/-80°C. Our default final concentration of glycerol is 50%. Customers could use it as reference.

---

**Shelf Life**

The shelf life is related to many factors, storage state, buffer ingredients, storage temperature and the stability of the protein itself. Generally, the shelf life of liquid form is 6 months at -20°C/-80°C. The shelf life of lyophilized form is 12 months at -20°C/-80°C.