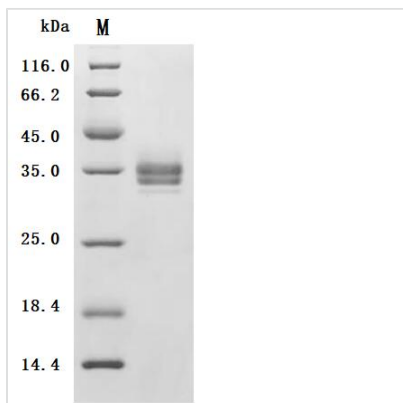


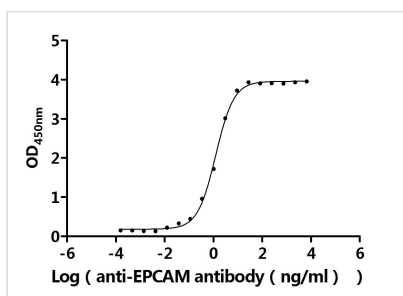


Recombinant Human Epithelial cell adhesion molecule (EPCAM), partial (Active)

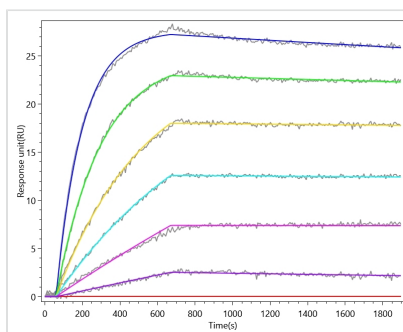
Product Code	CSB-MP007717HU
Abbreviation	Recombinant Human EPCAM protein, partial (Active)
Storage	The shelf life is related to many factors, storage state, buffer ingredients, storage temperature and the stability of the protein itself. Generally, the shelf life of liquid form is 6 months at -20°C/-80°C. The shelf life of lyophilized form is 12 months at -20°C/-80°C.
Uniprot No.	P16422
Form	Lyophilized powder
Storage Buffer	Lyophilized from a 0.2 µm sterile filtered PBS, 6% Trehalose, pH 7.4
Product Type	Recombinant Protein
Immunogen Species	Homo sapiens (Human)
Biological Activity	①Measured by its binding ability in a functional ELISA. Immobilized Human EPCAM at 2 µg/mL can bind Anti-EPCAM recombinant antibody (CSB-RA007717MA2HU). The EC50 is 1.098-1.401 ng/mL. ②EPCAM Recombinant Monoclonal Antibody (CSB-RA007717MA2HU) captured on Protein A Chip can bind Human EPCAM with an affinity constant of 0.742 nM as detected by MetaSPR Assay (WeSPRTM 200).
Purity	Greater than 95% as determined by SDS-PAGE.
Sequence	QEECV CENYK LAVNCFVNNNRQCQCTSVGAQNTVICSKLAAKCLVMKAEMN GSKLGRRAKPEGALQNNNDGLYDPDCDESGLFKAKQCNGTSMCWCVNTAGV RRTDKDTEITCSERVRTYWIIILKHKAREKPYDSKSLRTALQKEITTRYQLDPK FITSILYENNVITIDLQNSSQKTQNDVDIADVAYYFEKDVKGESLFHSSKMDLT VNGEQLDLDPGQTLIYYVDEKAPEFSMQGLK
Source	Mammalian cell
Target Names	EPCAM
Expression Region	24-265aa
Notes	Repeated freezing and thawing is not recommended. Store working aliquots at 4°C for up to one week.
Tag Info	C-terminal 10xHis-tagged
Mol. Weight	28.8 kDa
Protein Length	Partial
Image	



(Tris-Glycine gel) Discontinuous SDS-PAGE (reduced) with 5% enrichment gel and 15% separation gel.



Activity
 Measured by its binding ability in a functional ELISA. Immobilized Human EPCAM at 2 µg/ml can bind Anti-EPCAM recombinant antibody (CSB-RA007717MA2HU). The EC₅₀ is 1.098-1.401 ng/mL.



Activity
 EPCAM Recombinant Monoclonal Antibody (CSB-RA007717MA2HU) captured on Protein A Chip can bind Human EPCAM with an affinity constant of 0.742 nM as detected by MetaSPR Assay (WeSPRTM 200).

Endotoxin

Less than 1.0 EU/ug as determined by LAL method.

Reconstitution

We recommend that this vial be briefly centrifuged prior to opening to bring the contents to the bottom. Please reconstitute protein in deionized sterile water to a concentration of 0.1-1.0 mg/mL. We recommend to add 5-50% of glycerol (final concentration) and aliquot for long-term storage at -20°C/-80°C. Our default final concentration of glycerol is 50%. Customers could use it as reference.

Shelf Life

The shelf life is related to many factors, storage state, buffer ingredients, storage temperature and the stability of the protein itself. Generally, the shelf life of liquid form is 6 months at -20°C/-80°C. The shelf life of lyophilized form is 12 months at -20°C/-80°C.