



Recombinant Human Hepatocyte growth factor receptor (MET), partial, Biotinylated (Active)

Product Code	CSB-MP013714HU-B
Abbreviation	Recombinant Human MET protein, partial, Biotinylated (Active)
Storage	The shelf life is related to many factors, storage state, buffer ingredients, storage temperature and the stability of the protein itself. Generally, the shelf life of liquid form is 6 months at -20°C/-80°C. The shelf life of lyophilized form is 12 months at -20°C/-80°C.
Uniprot No.	P08581
Form	Lyophilized powder
Storage Buffer	Lyophilized from a 0.2 µm sterile filtered PBS, 6% Trehalose, pH 7.4
Product Type	Recombinant Protein
Immunogen Species	Homo sapiens (Human)
Biological Activity	<p>① Measured by its binding ability in a functional ELISA. Immobilized Anti-MET recombinant antibody (CSB-RA013714MA2HU). at 2 µg/mL can bind Biotinylated Human MET. The EC50 is 30.49-33.61 ng/mL.</p> <p>② MET Recombinant Monoclonal Antibody (CSB-RA013714MA2HU) captured on Protein A Chip can bind Recombinant Human MET with an affinity constant of 0.402 nM as detected by MetaSPR Assay (WeSPRTM 200).</p>
Purity	Greater than 95% as determined by SDS-PAGE.
Sequence	<p>ECKEALAKSEMNVNMKYQLPNFTAETPIQNVILHEHHIFLGATNYIYVLNEEDLQ KVAEYKTGPVLEHPDCFPCQDCSSKANLSGGVWVDNINMALVVDYDDQLI SCGSVNRGTCQRHVFPNHHTADIQSEVHCIFSPQIEEPSQCPDCVVSALGAKV LSSVKDRFINFFVGNTINSSYFPDHPHLSISVRRLKETKDGMFLTDQSYIDVLP EFRDSYPIKYVHAFESNNFIYFLTVQRETLDAQTFHTRIIRFCSINSGLSYMEM PLECILTEKRKKRSTKKEVFNILQAAYVSKPGAQLARQIGASLNDDILFGVFAQS KPDSAEPMDRSAMCAFPKIYVNDFFNKIVNKNVNRCLQHFYGPNEHCNRT LLRNSSGCEARRDEYRTEFTTALQRVDLFMGQFSEVLLTSISTFIKGDLTIANLG TSEGRFMQVVVSRSGPSTPHVNFLLDSHPVSPEVIVEHTLNQNGYTLVITGKKI TKIPLNGLGCRHFQSCSQCLSAPPFVQCGWCHDKCVRSEECLSGTWTQQICL PAIYKVFNPNSAPLEGGTRLTICGWDFGFRNKNKFDLKKTRVLLGNESCTLTSE STMNTLKCTVGPAMNKHFNMSIIISNGHGTTQYSTFSYVDPVITSISPKYGPMA GGTLTTLTGNYLNSGNSRHSISGGKTCTLKSVSNSILECYTPAQTISTEFAVKLKI DLANRETSIFSYPREDPIVYIEIHPTKSFISGGSTITGVGKNLNSVSVPRMVINVHE AGRNFTVACQHRSNSEIICCTTPSLQQLNLQLPLKTKAFFMLDGILSKYFDLIYV HNPVFKPFKPMISMGNENVLEIKGNIDIDPEAVKGEVLKVGKNSCENIHLHSE AVLCTVPNDLLKLNSELNIEWKQAISSTVLGKVVIVQPDQNF</p>
Source	Mammalian cell
Target Names	MET
Expression Region	25-932aa



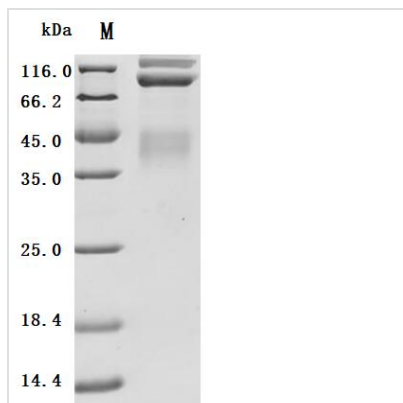
Notes Repeated freezing and thawing is not recommended. Store working aliquots at 4°C for up to one week.

Tag Info C-terminal 10xHis-Avi-tagged

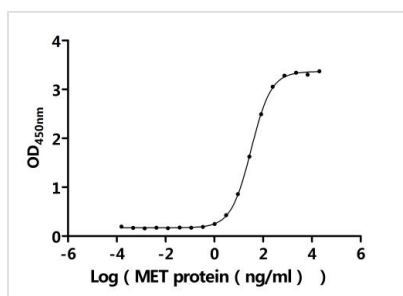
Mol. Weight 105.1 kDa

Protein Length Partial

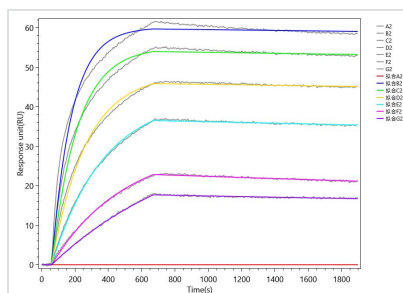
Image



(Tris-Glycine gel) Discontinuous SDS-PAGE (reduced) with 5% enrichment gel and 15% separation gel.



Activity
Measured by its binding ability in a functional ELISA. Immobilized Anti-MET recombinant antibody (CSB-RA013714MA2HU). at 2 µg/ml can bind Biotinylated Human MET. The EC₅₀ is 30.49-33.61 ng/mL.



Activity
MET Recombinant Monoclonal Antibody (CSB-RA013714MA2HU) captured on Protein A Chip can bind Recombinant Human MET with an affinity constant of 0.402 nM as detected by MetaSPR Assay (WeSPRTM 200).

Endotoxin Less than 1.0 EU/ug as determined by LAL method.

Reconstitution We recommend that this vial be briefly centrifuged prior to opening to bring the contents to the bottom. Please reconstitute protein in deionized sterile water to a concentration of 0.1-1.0 mg/mL. We recommend to add 5-50% of glycerol (final concentration) and aliquot for long-term storage at -20°C/-80°C. Our default final concentration of glycerol is 50%. Customers could use it as reference.

Shelf Life The shelf life is related to many factors, storage state, buffer ingredients, storage temperature and the stability of the protein itself. Generally, the shelf life of liquid form is 6 months at -20°C/-80°C. The shelf life of lyophilized form is 12 months at -20°C/-80°C.