



Recombinant Human P-selectin (SELP) (V640L), partial (Active)

Product Code	CSB-MP020978HU(M)d7
Abbreviation	Recombinant Human SELP protein (V640L), partial (Active)
Storage	The shelf life is related to many factors, storage state, buffer ingredients, storage temperature and the stability of the protein itself. Generally, the shelf life of liquid form is 6 months at -20°C/-80°C. The shelf life of lyophilized form is 12 months at -20°C/-80°C.
Uniprot No.	P16109
Form	Lyophilized powder
Storage Buffer	Lyophilized from a 0.2 µm sterile filtered PBS, 6% Trehalose, pH 7.4
Product Type	Recombinant Protein
Immunogen Species	Homo sapiens (Human)
Biological Activity	<p>① Measured by its binding ability in a functional ELISA. Immobilized Human SELP at 2 µg/mL can bind Anti-SELP recombinant antibody (CSB-RA020978MA2HU). The EC50 is 3.120-3.578 ng/mL.</p> <p>② SELP Recombinant Monoclonal Antibody (CSB-RA020978MA2HU) captured on Protein A Chip can bind Recombinant Human SELP with an affinity constant of 0.956 nM as detected by MetaSPR Assay (WeSPRTM 200).</p>
Purity	Greater than 95% as determined by SDS-PAGE.
Sequence	<p>WTYHYSTKAYSWNISRKYCQNRYTDLVAIQNKNEIDYLNKVLPPYSSYYWIGIR KNNKTWTWVGTKKALTNEAENWADNEPNNKRNNEDCVEIYIKSPSAPGKWN DEHCLKKKHALCYTASCQDMSCSKQGECLLETIGNYTCSCYPGFYGPCEYVR ECGELELPQHVLNMCNCSHPLGNFSFNSQCSFHCTDGYQVNGPSKLECLASGIW TNKPPQCLAAQCPPLKIPERGNMTCCLHSAKAFQHQSSCSFSCEEFGALVGPE VVQCTASGVWTAPAPVCKAVQCQHLEAPSEGTMDCVHPLTAFAYGSSCKFE CQPGYRVRGLDMLRCIDSGHWSAPLPTCEAISCEPLESPVHGSMDCSPSLRA FQYDTNCSFRCAEGFMLRGADIVRCNDNLGQWTAPAPVCQALQCQDLVPNE ARVNCNCSHPFGAFRYQSVCSFTCNEGLLLVGASVLQCLATGNWNSVPPECQAI PCTPLLSPQNGTMTCVQPLGSSSYKSTCQFICDEGYSLSGPERLDCTRSGRW TDSPPMCEAIKCELPFAPEQGS LDCSDTRGEFNVGSTCHFSCDNGFKLEGPN NVECTTSGRWSATPPTCKGIASLPTPGLQCPALTPGQGTM YCRHHPGTFGF NTTCYFGC NAGFTLIGDSTLSCRPSGQWTA VTPACRAVKCSELHVNKPIAMNC SNLWGNFSYGSICSFHCLLEGQLLNGSAQTACQENHWSTTVPTCQAGPLTIQ EA</p>
Source	Mammalian cell
Target Names	SELP
Expression Region	42-771aa(V640L)
Notes	Repeated freezing and thawing is not recommended. Store working aliquots at



4°C for up to one week.

Tag Info

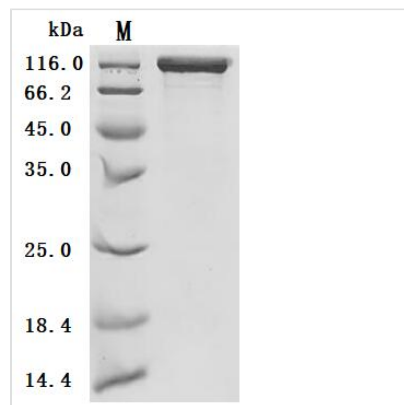
C-terminal 10xHis-tagged

Mol. Weight

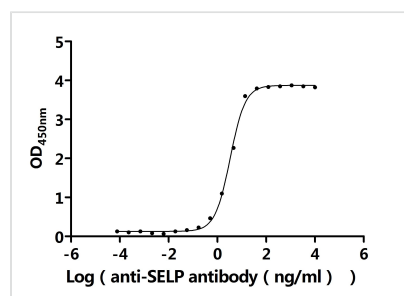
81.3 kDa

Protein Length

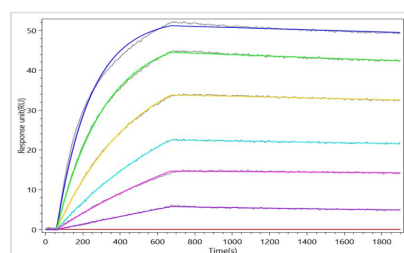
Partial

Image


(Tris-Glycine gel) Discontinuous SDS-PAGE (reduced) with 5% enrichment gel and 15% separation gel.


Activity

Measured by its binding ability in a functional ELISA. Immobilized Human SELP at 2 µg/ml can bind Anti-SELP recombinant antibody (CSB-RA020978MA2HU). The EC₅₀ is 3.120-3.578 ng/mL.


Activity

SELP Recombinant Monoclonal Antibody (CSB-RA020978MA2HU) captured on Protein A Chip can bind Recombinant Human SELP with an affinity constant of 0.956 nM as detected by MetaSPR Assay (WeSPRTM 200).

Endotoxin

Less than 1.0 EU/ug as determined by LAL method.

Reconstitution

We recommend that this vial be briefly centrifuged prior to opening to bring the contents to the bottom. Please reconstitute protein in deionized sterile water to a concentration of 0.1-1.0 mg/mL. We recommend to add 5-50% of glycerol (final concentration) and aliquot for long-term storage at -20°C/-80°C. Our default final concentration of glycerol is 50%. Customers could use it as reference.

Shelf Life

The shelf life is related to many factors, storage state, buffer ingredients, storage temperature and the stability of the protein itself.

Generally, the shelf life of liquid form is 6 months at -20°C/-80°C. The shelf life of lyophilized form is 12 months at -20°C/-80°C.