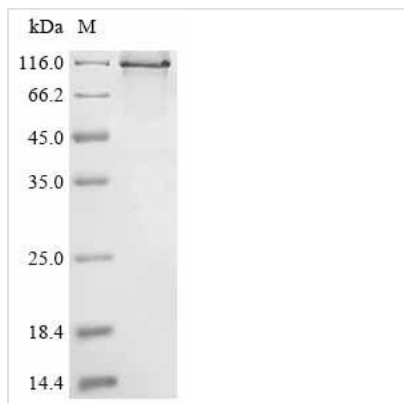




Recombinant Human Bone morphogenetic protein 1 (BMP1)

Product Code	CSB-MP002733HU
Abbreviation	Recombinant Human BMP1 protein
Uniprot No.	P13497
Form	Liquid or Lyophilized powder
Storage Buffer	If the delivery form is liquid, the default storage buffer is Tris/PBS-based buffer, 5%-50% glycerol. If the delivery form is lyophilized powder, the buffer before lyophilization is Tris/PBS-based buffer, 6% Trehalose, pH 8.49.
Immunogen Species	Homo sapiens (Human)
Purity	≥ 95% as determined by SDS-PAGE.
Sequence	AATSRPERVWPDGVIPFVIGGNFTGSQRAVFRQAMRHWEKHTCVTFLEERTDE DSYIVFTYRPGCCSYVGRRGGGPQAISIGKNCDKFGIVVHELGHVVGFWHE HTRPDRDRHVSIVRENIQPGQEYNFLKMEPQEVESLGETYDFDSIMHYARNTF SRGIFLDTIVPKYEVNGVKPPIGQRTRLSKGDIAQARKLYKCPACGETLQDSTG NFSSPEYPNGYSAHMHCVWRISVTPGEKIILNFTSLDLYRSRLCWYDYVEVRD GFWRKAPLRGRFCGSKLPEPIVSTDSRLWVEFRSSSNWVGKGFFAVYEICG GDVKKDYGHIQSPNYPDDYRPSKVCIWRIQVSEG FHVGLTFQSFEIERHDSCA YDYLEVRDGHSESSTLIGRYCGYEKPD DIKSTSSRLWLK FVSDGSINKAGFAV NFFKEVDECSRPNRGGCEQRCLNTLGSYKCSCDPGYELAPDKRRCEAACGG FLTKLNGSITSPGWPKEYPPNKNCIWQLVAPTQYRISLQDFDFETEGNDVCKY DFVEVRSGLTADSKLHGKFCGSEKPEVITSQYNNMRVEFKSDNTVSKKGKA HFFSDKDECSKDNGGCQQDCVNTFGSYECQCRSGFVLHDNKHDCKEAGCD HKVTSTSGTITSPNWPDKYPSKKECTWAISSTPGHRVKLTFMEMDIESQPECA YDHLEVFDGRDAKAPVLGRFCGSKKPEPVLATGSRMFLRFYSDNSVQRKGFQ ASHATECGGQVRADVTKDLYSHAQFGDNNYPGGVDCEWVIVAEEGYGVEL VFQTFEVEEETDCGYDYMELFDGYDSTAPRLGRYCGSGPPEEVYSAGDSVLV KFHSDDTITKKG FHLRYTSTKFQDTLHSRK
Research Area	Signal Transduction
Source	Mammalian cell
Target Names	BMP1
Expression Region	121-986aa
Tag Info	N-terminal hFc1-tagged
Mol. Weight	124.1 kDa
Protein Length	Full Length of Mature Protein
Image	



(Tris-Glycine gel) Discontinuous SDS-PAGE (reduced) with 5% enrichment gel and 15% separation gel.

Reconstitution

We recommend that this vial be briefly centrifuged prior to opening to bring the contents to the bottom. Please reconstitute protein in deionized sterile water to a concentration of 0.1-1.0 mg/mL. We recommend to add 5-50% of glycerol (final concentration) and aliquot for long-term storage at -20°C/-80°C. Our default final concentration of glycerol is 50%. Customers could use it as reference.

Shelf Life

The shelf life is related to many factors, storage state, buffer ingredients, storage temperature and the stability of the protein itself. Generally, the shelf life of liquid form is 6 months at -20°C/-80°C. The shelf life of lyophilized form is 12 months at -20°C/-80°C.