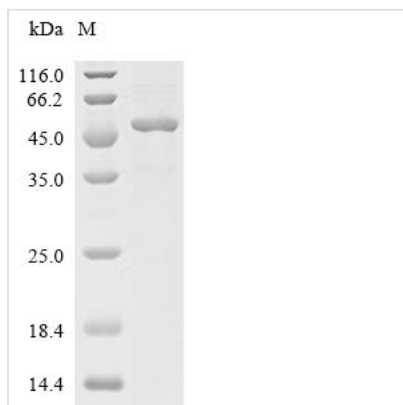




Recombinant Human Dual specificity protein phosphatase 6 (DUSP6)

Product Code	CSB-EP621973HUc7
Abbreviation	Recombinant Human DUSP6 protein
Uniprot No.	Q16828
Form	Liquid or Lyophilized powder
Storage Buffer	If the delivery form is liquid, the default storage buffer is Tris/PBS-based buffer, 5%-50% glycerol. If the delivery form is lyophilized powder, the buffer before lyophilization is Tris/PBS-based buffer, 6% Trehalose, pH 8.214.
Immunogen Species	Homo sapiens (Human)
Purity	Greater than 85% as determined by SDS-PAGE.
Sequence	MIDTLRPVPFASEMAISKTVAWLNEQLELGNERLLLMDCRPQELYESSHIESAI NVAIPGIMLRRLQKGNLPVRALFTRGEDRDRFTRRCGTDTVVLYDESSSDWN ENTGGESVLGLLLKCLKDEGCRAFYLEGGFSKFQAEFSLHCETNLDGSCSSSS PPLPVLGLGGLRISDSSSDIESDLDRDPNSATDSDGSPLSNSQPSFPVEILPF LYLGCAKDSTNLDVLEEFGIKYILNVTPNLPNLFENAGEFKYKQIPISDHWSQNL SQFFPEAISFIDEARGKNCVGVHCLAGISRSVTVTVAYLMQKLNLMSMNDAYDI VKMKKSNISPNFNFMGQLLDFERTLGLSSPCDNRVPAQQLYFTTPSNQNVYQ VDSLQST
Research Area	Neuroscience
Source	E.coli
Target Names	DUSP6
Expression Region	1-381aa
Tag Info	C-terminal 6xHis-tagged
Mol. Weight	49.2 kDa
Protein Length	Full Length

Image



(Tris-Glycine gel) Discontinuous SDS-PAGE (reduced) with 5% enrichment gel and 15% separation gel.

**Reconstitution**

We recommend that this vial be briefly centrifuged prior to opening to bring the contents to the bottom. Please reconstitute protein in deionized sterile water to a concentration of 0.1-1.0 mg/mL. We recommend to add 5-50% of glycerol (final concentration) and aliquot for long-term storage at -20°C/-80°C. Our default final concentration of glycerol is 50%. Customers could use it as reference.

Shelf Life

The shelf life is related to many factors, storage state, buffer ingredients, storage temperature and the stability of the protein itself. Generally, the shelf life of liquid form is 6 months at -20°C/-80°C. The shelf life of lyophilized form is 12 months at -20°C/-80°C.