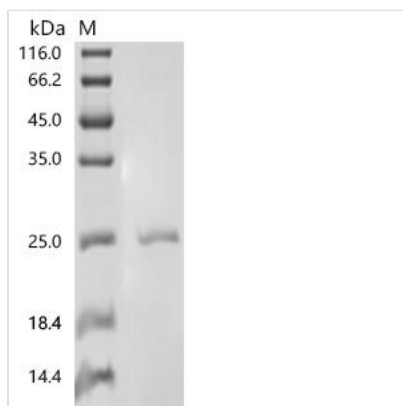




Recombinant *Saccharomyces cerevisiae* Lipid-anchored plasma membrane protein CPP1 (CPP1)

Product Code	CSB-EP334389SVG
Abbreviation	Recombinant <i>Saccharomyces cerevisiae</i> CPP1 protein
Uniprot No.	P38216
Form	Liquid or Lyophilized powder
Storage Buffer	If the delivery form is liquid, the default storage buffer is Tris/PBS-based buffer, 5%-50% glycerol. If the delivery form is lyophilized powder, the buffer before lyophilization is Tris/PBS-based buffer, 6% Trehalose, pH 8.226.
Immunogen Species	<i>Saccharomyces cerevisiae</i> (strain ATCC 204508 / S288c) (Baker's yeast)
Purity	Greater than 90% as determined by SDS-PAGE.
Sequence	SANDYYGGTAGEKKSQYSRPSNPPPSSAHQNKTQERGYPPQQQQYYQQQQ QHPGYYNQQGYNQQGYNQQGYNQQGYNQQGYNQQGYNQQGYNQQGHQQPVVVQ QQPPQRGNEGCLAACLAALCICCTMDMLF
Research Area	Others
Source	E.coli
Target Names	CPP1
Expression Region	2-128aa
Tag Info	C-terminal 6xHis-tagged
Mol. Weight	21.4 kDa
Protein Length	Full Length of Mature Protein

Image



(Tris-Glycine gel) Discontinuous SDS-PAGE (reduced) with 5% enrichment gel and 15% separation gel.

Reconstitution

We recommend that this vial be briefly centrifuged prior to opening to bring the contents to the bottom. Please reconstitute protein in deionized sterile water to a concentration of 0.1-1.0 mg/mL. We recommend to add 5-50% of glycerol (final concentration) and aliquot for long-term storage at -20^o/-80^o. Our default final concentration of glycerol is 50%. Customers could use it as reference.



Shelf Life

The shelf life is related to many factors, storage state, buffer ingredients, storage temperature and the stability of the protein itself.

Generally, the shelf life of liquid form is 6 months at -20°C/-80°C. The shelf life of lyophilized form is 12 months at -20°C/-80°C.