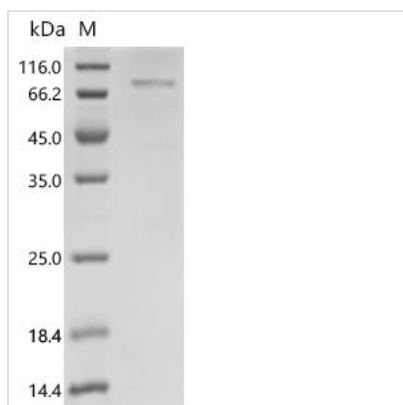




Recombinant Human Lysyl oxidase homolog 1 (LOXL1)

Product Code	CSB-EP013040HU(A4)a2
Abbreviation	Recombinant Human LOXL1 protein
Uniprot No.	Q08397
Form	Liquid or Lyophilized powder
Storage Buffer	If the delivery form is liquid, the default storage buffer is Tris/PBS-based buffer, 5%-50% glycerol. If the delivery form is lyophilized powder, the buffer before lyophilization is Tris/PBS-based buffer, 6% Trehalose, pH 8.229.
Immunogen Species	Homo sapiens (Human)
Purity	Greater than 85% as determined by SDS-PAGE.
Sequence	RQAPSLPLPGRVGS DTVRGQARHPFGFGQVPDNWREVAVG DSTGMARART SVSQQRHGGSSASSVSASAFASYRQQPSYPQQFPYPQAPFVSQYENYDPAS RTYDQGFVYYRPAGGGV GAGAAVASAGVIYPYQPRARYEEYGGGEELPEY PPQGFYPAPERPYVPPPPPPDGLDRRYSHSLYSEGTPGF EQAYPDPGPEAA QAHGGDPRLGWYPPYANPPPEAYGPPRALEPPYLPVRSSDTPPPGGERNGA QQGRLSVG SVYRPNQNGRGLPDLVPDPNYVQASTYVQRAHLYSLRCAAEEK CLASTAYAPEATDYDVRVLLRFPQRVK NQGTADFLPNRPRHTWEWHSCHQH YHSMDEF SHYDLLDAATGKKVAEGHKASF CLEDSTCDFGNLKRYACTSHTQG LSPGCYDTYNADIDCQWIDITDVQPGNYILKVHV NPKYIVLESDF TNNVVR CNIH YTGRYVSATNCKIVQS
Research Area	Metabolism
Source	E.coli
Target Names	LOXL1
Expression Region	95-574aa
Tag Info	N-terminal 6xHis-SUMO-tagged
Mol. Weight	71.1 kDa
Protein Length	Full Length of Mature Protein

Image



(Tris-Glycine gel) Discontinuous SDS-PAGE (reduced) with 5% enrichment gel and 15% separation gel.



Reconstitution

We recommend that this vial be briefly centrifuged prior to opening to bring the contents to the bottom. Please reconstitute protein in deionized sterile water to a concentration of 0.1-1.0 mg/mL. We recommend to add 5-50% of glycerol (final concentration) and aliquot for long-term storage at -20°C/-80°C. Our default final concentration of glycerol is 50%. Customers could use it as reference.

Shelf Life

The shelf life is related to many factors, storage state, buffer ingredients, storage temperature and the stability of the protein itself. Generally, the shelf life of liquid form is 6 months at -20°C/-80°C. The shelf life of lyophilized form is 12 months at -20°C/-80°C.