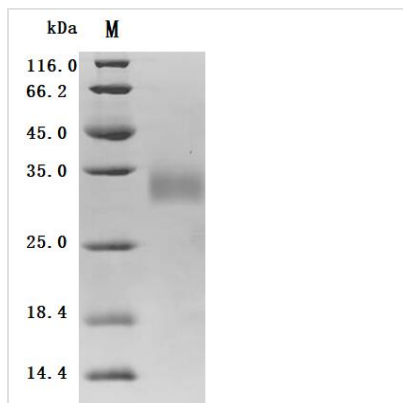


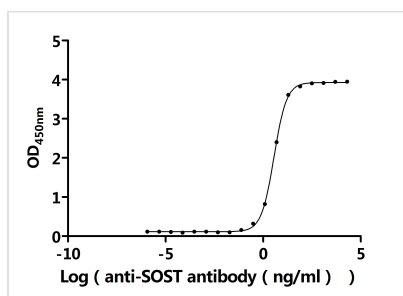


Recombinant Human Sclerostin (SOST) (Active)

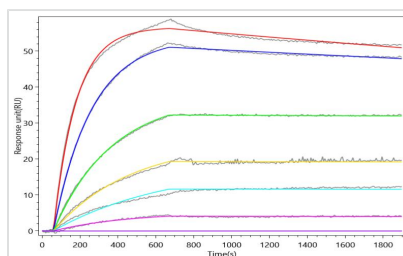
Product Code	CSB-MP858415HUd7
Abbreviation	Recombinant Human SOST protein (Active)
Storage	The shelf life is related to many factors, storage state, buffer ingredients, storage temperature and the stability of the protein itself. Generally, the shelf life of liquid form is 6 months at -20°C/-80°C. The shelf life of lyophilized form is 12 months at -20°C/-80°C.
Uniprot No.	Q9BQB4
Form	Lyophilized powder
Storage Buffer	Lyophilized from a 0.2 µm sterile filtered PBS, 6% Trehalose, pH 7.4
Product Type	Recombinant Protein
Immunogen Species	Homo sapiens (Human)
Biological Activity	① Measured by its binding ability in a functional ELISA. Immobilized Human SOST at 2 µg/mL can bind Anti-SOST recombinant antibody (CSB-RA858415MA1HU). The EC50 is 3.442-3.726 ng/mL. ② SOST Recombinant Monoclonal Antibody (CSB-RA858415MA1HU) captured on Protein A Chip can bind Recombinant Human SOST with an affinity constant of 0.324 nM as detected by MetaSPR Assay (WeSPRTM 200).
Purity	Greater than 95% as determined by SDS-PAGE.
Sequence	QGWWQAFKNDATTEIPELGEYPEPPPELENNKTMNRAENGGRRPPHHPFETKDV SEYSCRELHFTRYVTDGPCRSAPVTELVCSGQCGLPARLLPNAIGRGKWWRP SGPDFRCIPDRYRAQRVQLLCPGGAPRARKVRLVASCKCKRLTRFHNQSEL KDFGTEAARPQKGRKPRPRARSAKANQAELENAY
Source	Mammalian cell
Target Names	SOST
Expression Region	24-213aa
Notes	Repeated freezing and thawing is not recommended. Store working aliquots at 4°C for up to one week.
Tag Info	C-terminal 10xHis-tagged
Mol. Weight	22.9 kDa
Protein Length	Full Length of Mature Protein
Image	



(Tris-Glycine gel) Discontinuous SDS-PAGE (reduced) with 5% enrichment gel and 15% separation gel.



Activity
Measured by its binding ability in a functional ELISA. Immobilized Human SOST at 2 $\mu\text{g/ml}$ can bind Anti-SOST recombinant antibody (CSB-RA858415MA1HU). The EC_{50} is 3.442-3.726 ng/mL.



Activity
SOST Recombinant Monoclonal Antibody (CSB-RA858415MA1HU) captured on Protein A Chip can bind Recombinant Human SOST with an affinity constant of 0.324 nM as detected by MetaSPR Assay (WeSPRTM 200).

Endotoxin

Less than 1.0 EU/ug as determined by LAL method.

Reconstitution

We recommend that this vial be briefly centrifuged prior to opening to bring the contents to the bottom. Please reconstitute protein in deionized sterile water to a concentration of 0.1-1.0 mg/mL. We recommend to add 5-50% of glycerol (final concentration) and aliquot for long-term storage at $-20^{\circ}\text{C}/-80^{\circ}\text{C}$. Our default final concentration of glycerol is 50%. Customers could use it as reference.

Shelf Life

The shelf life is related to many factors, storage state, buffer ingredients, storage temperature and the stability of the protein itself. Generally, the shelf life of liquid form is 6 months at $-20^{\circ}\text{C}/-80^{\circ}\text{C}$. The shelf life of lyophilized form is 12 months at $-20^{\circ}\text{C}/-80^{\circ}\text{C}$.