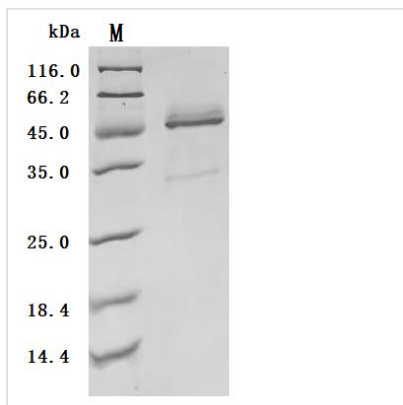


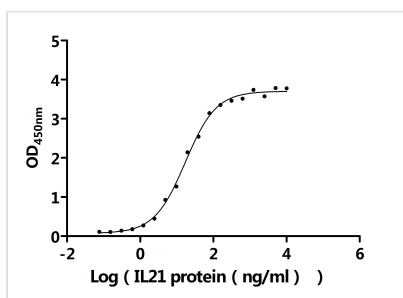


Recombinant Human Interleukin-21 (IL21) (Active)

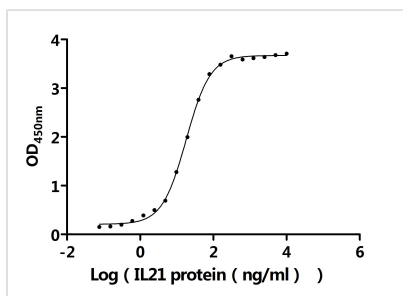
Product Code	CSB-MP872537HU
Abbreviation	Recombinant Human IL21 protein (Active)
Storage	The shelf life is related to many factors, storage state, buffer ingredients, storage temperature and the stability of the protein itself. Generally, the shelf life of liquid form is 6 months at -20°C/-80°C. The shelf life of lyophilized form is 12 months at -20°C/-80°C.
Uniprot No.	Q9HBE4
Form	Lyophilized powder
Storage Buffer	Lyophilized from a 0.2 µm sterile filtered PBS, 6% Trehalose, pH 7.4
Product Type	Recombinant Protein
Immunogen Species	Homo sapiens (Human)
Biological Activity	<p>① Measured by its binding ability in a functional ELISA. Immobilized Macaca fascicularis IL21R (CSB-MP7140MOV) at 2 µg/mL can bind Human IL21. The EC50 is 15.01-19.43 ng/mL.</p> <p>② Measured by its binding ability in a functional ELISA. Immobilized Human IL21R (CSB-MP862061HU) at 2 µg/mL can bind Human IL21. The EC50 is 16.65-19.49 ng/mL.</p> <p>③ Human IL21 captured on Protein A Chip can bind Recombinant Macaca fascicularis IL21R (CSB-MP7140MOV) with an affinity constant of 1.31 nM as detected by MetaSPR Assay (WeSPR™ 200).</p> <p>④ Human IL21 captured on Protein A Chip can bind Recombinant Human IL21R (CSB-MP862061HU) with an affinity constant of 1.87 nM as detected by MetaSPR Assay (WeSPR™ 200).</p>
Purity	Greater than 90% as determined by SDS-PAGE.
Sequence	QGQDRHMIRMRLIDIVDQLKNYVNDLVPEFLPAPEDVETNCEWSAFSCFQKA QLKSANTGNNERIINVSIKKLRKPPSTNAGRRQKHRLTCPSCDSEYKPPKEF LERFKSLLQKMIHQHLSSRTHGSEDS
Source	Mammalian cell
Target Names	IL21
Expression Region	23-155aa
Notes	Repeated freezing and thawing is not recommended. Store working aliquots at 4°C for up to one week.
Tag Info	C-terminal hFc1-tagged
Mol. Weight	44.4 kDa
Protein Length	Full Length of Mature Protein
Image	



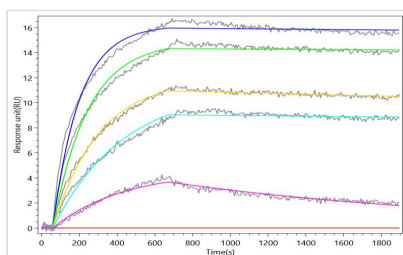
(Tris-Glycine gel) Discontinuous SDS-PAGE (reduced) with 5% enrichment gel and 15% separation gel.



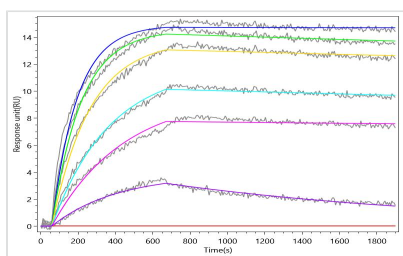
Activity
Measured by its binding ability in a functional ELISA. Immobilized *Macaca fascicularis* IL21R (CSB-MP7140MOV) at 2 µg/ml can bind Human IL21. The EC₅₀ is 15.01-19.43 ng/mL.



Activity
Measured by its binding ability in a functional ELISA. Immobilized Human IL21R (CSB-MP862061HU) at 2 µg/ml can bind Human IL21. The EC₅₀ is 16.65-19.49 ng/mL.



Activity
Human IL21 captured on Protein A Chip can bind Recombinant *Macaca fascicularis* IL21R (CSB-MP7140MOV) with an affinity constant of 1.31 nM as detected by MetaSPR Assay (WeSPRTM 200).



Activity
Human IL21 captured on Protein A Chip can bind Recombinant Human IL21R (CSB-MP862061HU) with an affinity constant of 1.87 nM as detected by MetaSPR Assay (WeSPRTM 200).

Endotoxin

Less than 1.0 EU/ug as determined by LAL method.

Reconstitution

We recommend that this vial be briefly centrifuged prior to opening to bring the contents to the bottom. Please reconstitute protein in deionized sterile water to a



concentration of 0.1-1.0 mg/mL. We recommend to add 5-50% of glycerol (final concentration) and aliquot for long-term storage at -20°C/-80°C. Our default final concentration of glycerol is 50%. Customers could use it as reference.

Shelf Life

The shelf life is related to many factors, storage state, buffer ingredients, storage temperature and the stability of the protein itself.

Generally, the shelf life of liquid form is 6 months at -20°C/-80°C. The shelf life of lyophilized form is 12 months at -20°C/-80°C.