

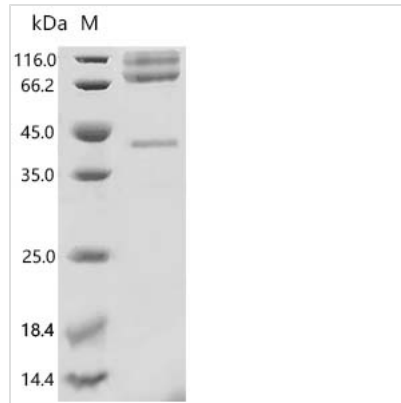


# Recombinant *Macaca fascicularis* glypican-3 (GPC3), partial (Active)

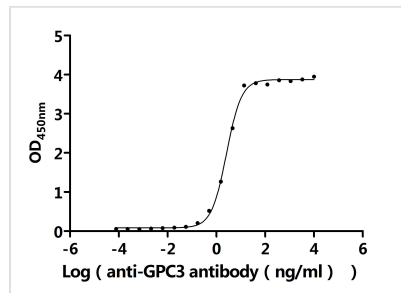
<b>Product Code</b>	CSB-MP7605MOV
<b>Abbreviation</b>	Recombinant Cynomolgus monkey GPC3 protein, partial (Active)
<b>Storage</b>	The shelf life is related to many factors, storage state, buffer ingredients, storage temperature and the stability of the protein itself. Generally, the shelf life of liquid form is 6 months at -20?/-80?. The shelf life of lyophilized form is 12 months at -20?/-80?.
<b>Uniprot No.</b>	XP_005594665.1
<b>Form</b>	Lyophilized powder
<b>Storage Buffer</b>	Lyophilized from a 0.2 μm sterile filtered PBS, 6% Trehalose, pH 7.4
<b>Product Type</b>	Recombinant Protein
<b>Immunogen Species</b>	<i>Macaca fascicularis</i> (Crab-eating macaque) (Cynomolgus monkey)
<b>Biological Activity</b>	<p>① Measured by its binding ability in a functional ELISA. Immobilized <i>Macaca fascicularis</i> GPC3 at 2 μg/mL can bind Anti-GPC3 recombinant antibody (CSB-RA009705A1HU). The EC50 is 2.428-2.771 ng/mL.</p> <p>② Measured by its binding ability in a functional ELISA. Immobilized <i>Macaca fascicularis</i> GPC3 at 2 μg/mL can bind Anti-GPC3 recombinant antibody (CSB-RA009705MA1HU). The EC50 is 4.451-5.233 ng/mL.</p> <p>③ GPC3 Recombinant Monoclonal Antibody (CSB-RA009705A1HU) captured on Protein A Chip can bind Recombinant <i>Macaca fascicularis</i> GPC3 with an affinity constant of 0.392 nM as detected by MetaSPR Assay (WeSPRTM 200).</p> <p>④ GPC3 Recombinant Monoclonal Antibody (CSB-RA009705MA1HU) captured on Protein A Chip can bind Recombinant <i>Macaca fascicularis</i> GPC3 with an affinity constant of 0.228 nM as detected by MetaSPR Assay (WeSPRTM 200).</p>
<b>Purity</b>	Greater than 95% as determined by SDS-PAGE.
<b>Sequence</b>	<p>QPPPPPPDATCHQVRSFFQRLQPGLKWWPETPVPGSDLQVCLPKGPTCCSR  KMEEKYQLTARLNMEQLLQSASMELKFLIIQNAAVFQEAFEIVVRHAKNYTNAM  FKNNYPSLTPQAFEFVGEFFTDVSLYILGSDINVDDMVNELFDSLFPVIYTQLM  NPGLPDSALDINECLRGARRDLKVFGNFPKLIMTQVSKSLQVTRIFLQALNLGIE  VINTTDHLKFSKDCGRMLTRMWYCSYCQGLMMVKPCGGYCNVVMQGC MAG  VVEIDKYWREYILSLEELVNGMYRIYDMENVLLGLFSTIHDSIQYVQKNAGKLT  TIGKLC AHSQQRQYRSAYYPEDLFIDKKVLKVAHVEHEETLSSRRRELIQKLKS  FISFYSALPGYICSHSPVAENDTLCWNGQELVERYSQKAARNGMKNQFNLHEL  KMKGPEPVVSQIIDKCLKHINQLLRTMSVPKGRVLDKNLDEEGFESGDCGDD  ECIGSGDGMKVKNQLRFLAELAYDLDDVPGNNQQATPKDNEISTFHNL  GNVH</p>
<b>Source</b>	Mammalian cell
<b>Target Names</b>	GPC3
<b>Expression Region</b>	25-559aa



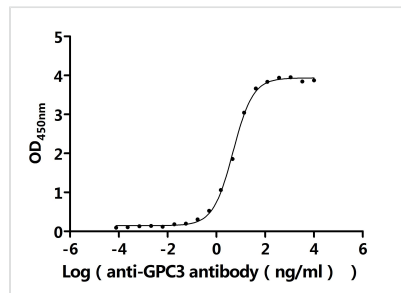
<b>Notes</b>	Repeated freezing and thawing is not recommended. Store working aliquots at 4? for up to one week.
<b>Tag Info</b>	C-terminal 10xHis-tagged
<b>Mol. Weight</b>	62.5 kDa
<b>Protein Length</b>	Partial

**Image**


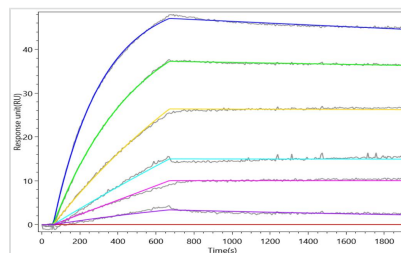
(Tris-Glycine gel) Discontinuous SDS-PAGE (reduced) with 5% enrichment gel and 15% separation gel.


**Activity**

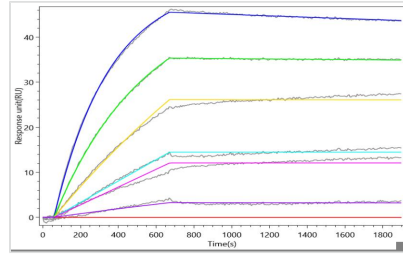
Measured by its binding ability in a functional ELISA. Immobilized *Macaca fascicularis* GPC3 at 2 µg/ml can bind Anti-GPC3 recombinant antibody (CSB-RA009705A1HU). The EC<sub>50</sub> is 2.428-2.771 ng/mL.


**Activity**

Measured by its binding ability in a functional ELISA. Immobilized *Macaca fascicularis* GPC3 at 2 µg/ml can bind Anti-GPC3 recombinant antibody (CSB-RA009705MA1HU). The EC<sub>50</sub> is 4.451-5.233 ng/mL.


**Activity**

GPC3 Recombinant Monoclonal Antibody (CSB-RA009705A1HU) captured on Protein A Chip can bind Recombinant *Macaca fascicularis* GPC3 with an affinity constant of 0.392 nM as detected by MetaSPR Assay (WeSPRTM 200).



**Activity**  
 GPC3 Recombinant Monoclonal Antibody (CSB-RA009705MA1HU) captured on Protein A Chip can bind Recombinant Macaca fascicularis GPC3 with an affinity constant of 0.228 nM as detected by MetaSPR Assay (WeSPRTM 200).

**Endotoxin**

Less than 1.0 EU/ug as determined by LAL method.

**Reconstitution**

We recommend that this vial be briefly centrifuged prior to opening to bring the contents to the bottom. Please reconstitute protein in deionized sterile water to a concentration of 0.1-1.0 mg/mL. We recommend to add 5-50% of glycerol (final concentration) and aliquot for long-term storage at -20°C/-80°C. Our default final concentration of glycerol is 50%. Customers could use it as reference.

**Shelf Life**

The shelf life is related to many factors, storage state, buffer ingredients, storage temperature and the stability of the protein itself. Generally, the shelf life of liquid form is 6 months at -20°C/-80°C. The shelf life of lyophilized form is 12 months at -20°C/-80°C.