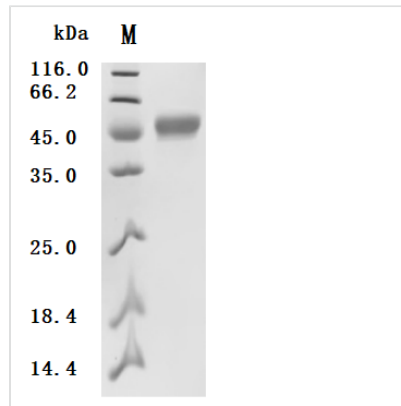


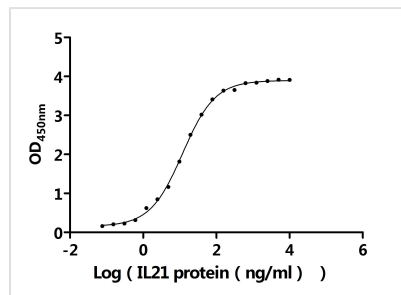


Recombinant Mouse Interleukin-21 (IL21), partial (Active)

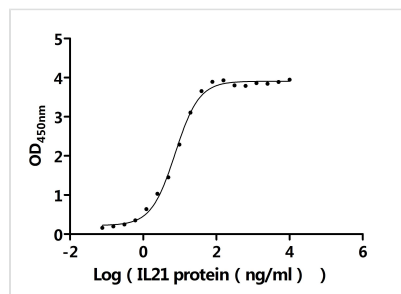
Product Code	CSB-MP887666MO1
Abbreviation	Recombinant Mouse IL21 protein, partial (Active)
Storage	The shelf life is related to many factors, storage state, buffer ingredients, storage temperature and the stability of the protein itself. Generally, the shelf life of liquid form is 6 months at -20?/-80?. The shelf life of lyophilized form is 12 months at -20?/-80?.
Uniprot No.	Q9ES17
Form	Lyophilized powder
Storage Buffer	Lyophilized from a 0.2 μm sterile filtered PBS, 6% Trehalose, pH 7.4
Product Type	Recombinant Protein
Immunogen Species	Mus musculus (Mouse)
Biological Activity	<p>①Measured by its binding ability in a functional ELISA. Immobilized Human IL21R (CSB-MP862061HU) at 2 μg/mL can bind Mouse IL21. The EC50 is 10.79-13.20 ng/mL.</p> <p>②Measured by its binding ability in a functional ELISA. Immobilized Mouse IL21r (CSB-MP864315MO) at 2 μg/mL can bind Mouse IL21. The EC50 is 6.858-8.187 ng/mL.</p> <p>③Mouse IL21 captured on Protein A Chip can bind Recombinant Human IL21R (CSB-MP862061HU) with an affinity constant of 2.06 nM as detected by MetaSPR Assay (WeSPRTM 200).</p> <p>④Mouse IL21 captured on Protein A Chip can bind Recombinant Mouse IL21r (CSB-MP864315MO) with an affinity constant of 0.146 nM as detected by MetaSPR Assay (WeSPRTM 200).</p>
Purity	Greater than 90% as determined by SDS-PAGE.
Sequence	PDRLLIRLRHLIDIVEQLKIYENDLDPELLSAPQDVKGHCEHAAFACFQKAKLKP SNPGNNKTFIIDLVAQLRRRLPARRGGKKQKHIKCPSCDSYEK RTPKEFLERL KWLLQKMIHQHLS
Source	Mammalian cell
Target Names	IL21
Expression Region	25-146aa
Notes	Repeated freezing and thawing is not recommended. Store working aliquots at 4? for up to one week.
Tag Info	C-terminal hFc1-tagged
Mol. Weight	43.2 kDa
Protein Length	Partial


Image


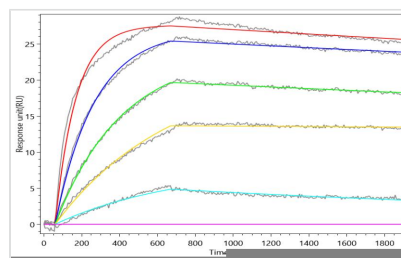
(Tris-Glycine gel) Discontinuous SDS-PAGE (reduced) with 5% enrichment gel and 15% separation gel.



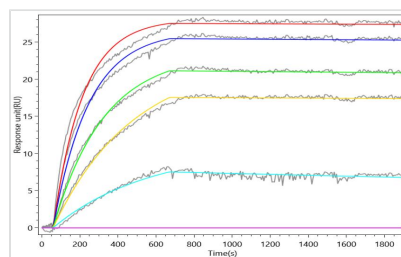
Activity
 Measured by its binding ability in a functional ELISA. Immobilized Human IL21R (CSB-MP862061HU) at 2 µg/ml can bind Mouse IL21. The EC₅₀ is 10.79-13.20 ng/mL.



Activity
 Measured by its binding ability in a functional ELISA. Immobilized Mouse IL21r (CSB-MP864315MO) at 2 µg/ml can bind Mouse IL21. The EC₅₀ is 6.858-8.187 ng/mL.



Activity
 Mouse IL21 captured on Protein A Chip can bind Recombinant Human IL21R (CSB-MP862061HU) with an affinity constant of 2.06 nM as detected by MetaSPR Assay (WeSPRTM 200).



Activity
 Mouse IL21 captured on Protein A Chip can bind Recombinant Mouse IL21r (CSB-MP864315MO) with an affinity constant of 0.146 nM as detected by MetaSPR Assay (WeSPRTM 200).

Endotoxin

Less than 1.0 EU/ug as determined by LAL method.

Reconstitution

We recommend that this vial be briefly centrifuged prior to opening to bring the



contents to the bottom. Please reconstitute protein in deionized sterile water to a concentration of 0.1-1.0 mg/mL. We recommend to add 5-50% of glycerol (final concentration) and aliquot for long-term storage at -20°C/-80°C. Our default final concentration of glycerol is 50%. Customers could use it as reference.

Shelf Life

The shelf life is related to many factors, storage state, buffer ingredients, storage temperature and the stability of the protein itself.

Generally, the shelf life of liquid form is 6 months at -20°C/-80°C. The shelf life of lyophilized form is 12 months at -20°C/-80°C.