



# Recombinant Human E-selectin (SELE), partial (Active)

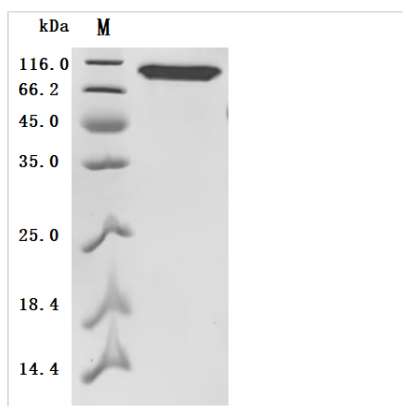
<b>Product Code</b>	CSB-MP020975HU1
<b>Abbreviation</b>	Recombinant Human SELE protein, partial (Active)
<b>Storage</b>	The shelf life is related to many factors, storage state, buffer ingredients, storage temperature and the stability of the protein itself. Generally, the shelf life of liquid form is 6 months at -20?/-80?. The shelf life of lyophilized form is 12 months at -20?/-80?.
<b>Uniprot No.</b>	P16581
<b>Form</b>	Lyophilized powder
<b>Storage Buffer</b>	Lyophilized from a 0.2 µm sterile filtered PBS, 6% Trehalose, pH 7.4
<b>Product Type</b>	Recombinant Protein
<b>Immunogen Species</b>	Homo sapiens (Human)
<b>Biological Activity</b>	<p>①Measured by its binding ability in a functional ELISA. Immobilized Human SELE at 2 µg/mL can bind Anti-SELE recombinant antibody (CSB-RA020975MA1HU). The EC50 is 0.4369-0.5030 ng/mL.</p> <p>②SELE Recombinant Monoclonal Antibody (CSB-RA020975MA1HU) captured on Protein A Chip can bind Human SELE with an affinity constant of 1.41 nM as detected by MetaSPR Assay (WeSPR™ 200).</p>
<b>Purity</b>	Greater than 95% as determined by SDS-PAGE. Greater than 95% as determined by SEC-HPLC.
<b>Sequence</b>	<p>WSYNTSTEAMTYDEASAYCQQRythlVAIQNKEEIEYLNSILSYSPSYWIGIR  KVNNVWVWVGTQKPLTEEAKNWAPGEPNNRQKDEDCVEIYIKREKDVGMWN  DERCSKKLALCYTAACNTNTSCSGHGECVETINNYTCKCDPGFSGLKCEQIVN  CTALESPEHGSLVCSHPLGNFSYNSSCSISCDRGYLPSSMETMQCMSSGEW  SAIPACNVVECDAVTNPANGFVECFQNPGSFPWNTTCTFDCEEGLMGAQ  SLQCTSSGNWDNEKPTCKAVTCRAVRQPQNGSVRCSHSPAGEFTFKSSCNF  TCEEGFMLQGPAQVECTTQGQWTQQIPVCEAFQCTALSNPERGYMNCLPSA  SGSFRYGSSCFEFSCEQGFVLKGSKRLQCGPTGEWDNEKPTCEAVRCDAVHQ  PPKGLVRCAHSPIGEFTYKSSCAFSCEEGLHGSTQLECTSQGQWTEEVPS  CQVVKCSSLAVPGKINMSCSGEPVFGTVCKFACPEGWTLNGSAARTCGATG  HWSGLLPTCEAPTESNIP</p>
<b>Source</b>	Mammalian cell
<b>Target Names</b>	SELE
<b>Expression Region</b>	22-556aa
<b>Notes</b>	Repeated freezing and thawing is not recommended. Store working aliquots at 4? for up to one week.
<b>Tag Info</b>	C-terminal 10xHis-tagged



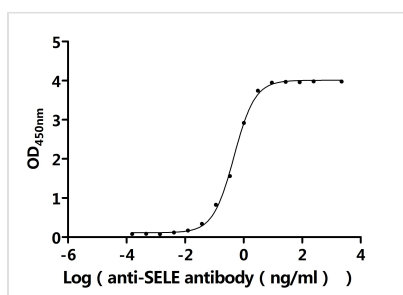
**Mol. Weight** 60.0 kDa

**Protein Length** Partial

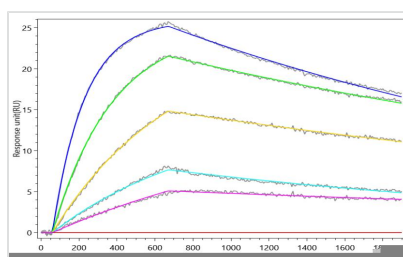
**Image**



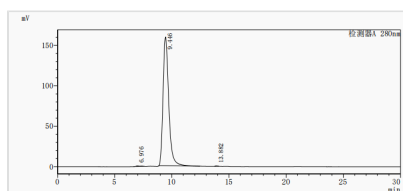
(Tris-Glycine gel) Discontinuous SDS-PAGE (reduced) with 5% enrichment gel and 15% separation gel.



**Activity**  
Measured by its binding ability in a functional ELISA. Immobilized Human SELE at 2  $\mu\text{g/ml}$  can bind Anti-SELE recombinant antibody (CSB-RA020975MA1HU). The  $\text{EC}_{50}$  is 0.4369-0.5030 ng/mL.



**Activity**  
SELE Recombinant Monoclonal Antibody (CSB-RA020975MA1HU) captured on Protein A Chip can bind Human SELE with an affinity constant of 1.41 nM as detected by MetaSPR Assay (WeSPRTM 200).



The purity of SELE was greater than 95% as determined by SEC-HPLC

**Endotoxin** Less than 1.0 EU/ $\mu\text{g}$  as determined by LAL method.

**Reconstitution** We recommend that this vial be briefly centrifuged prior to opening to bring the contents to the bottom. Please reconstitute protein in deionized sterile water to a concentration of 0.1-1.0 mg/mL. We recommend to add 5-50% of glycerol (final concentration) and aliquot for long-term storage at  $-20^{\circ}\text{C}/-80^{\circ}\text{C}$ . Our default final concentration of glycerol is 50%. Customers could use it as reference.

**Shelf Life** The shelf life is related to many factors, storage state, buffer ingredients, storage temperature and the stability of the protein itself. Generally, the shelf life of liquid form is 6 months at  $-20^{\circ}\text{C}/-80^{\circ}\text{C}$ . The shelf life



of lyophilized form is 12 months at -20°C/-80°C.