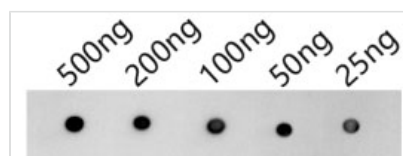




SYN1 Antibody

Product Code	CSB-PA890277XA23DOA
Storage	Upon receipt, store at -20°C or -80°C. Avoid repeated freeze.
Uniprot No.	Q9S7T7
Immunogen	Synthesized peptide derived from internal of Arabidopsis thaliana (Mouse-ear cress)SYN1 protein (559-576aa)
Raised In	Guinea pig
Species Reactivity	Arabidopsis thaliana (Mouse-ear cress)
Tested Applications	ELISA, WB; Recommended dilution: WB:1:500-1:5000
Form	Liquid
Conjugate	Non-conjugated
Storage Buffer	Preservative: 0.03% Proclin 300 Constituents: 50% Glycerol, 0.01M PBS, pH 7.4
Purification Method	Antigen Affinity Purified
Isotype	IgG
Clonality	Polyclonal
Product Type	Polyclonal Antibody
Immunogen Species	Arabidopsis thaliana (Mouse-ear cress)
Target Names	SYN1

Image



Dot blot analysis of peptides corresponding to the immunogen was probed with SYN1 Antibody at a dilution of 1:1000. Blocking/Dilution buffer: 4% nonfat dry milk/PBS. Secondary antibody: Rabbit Anti-Guinea Pig IgG H&L at 1/4000 dilution. Exposure time: 2min.

Usage

For Research Use Only. Not for use in diagnostic or therapeutic procedures.