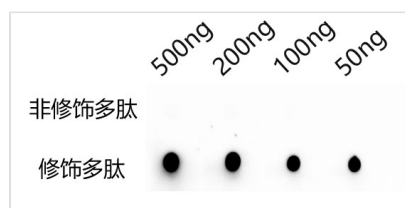




Phospho-LDB19(T607) Antibody

Product Code	CSB-PA615513XA01phSVG
Storage	Upon receipt, store at -20°C or -80°C. Avoid repeated freeze.
Uniprot No.	Q12502
Immunogen	Synthesized peptide derived from internal of Saccharomyces cerevisiae (strain ATCC 204508 / S288c) (Baker's yeast) Phospho-LDB19(T607) protein (595-610aa)
Raised In	Rabbit
Species Reactivity	Saccharomyces cerevisiae (strain ATCC 204508 / S288c) (Baker's yeast)
Tested Applications	ELISA, WB; Recommended dilution: WB:1:500-1:5000
Form	Liquid
Conjugate	Non-conjugated
Storage Buffer	Preservative: 0.03% Proclin 300 Constituents: 50% Glycerol, 0.01M PBS, pH 7.4
Purification Method	Antigen Affinity Purified
Isotype	IgG
Clonality	Polyclonal
Product Type	Polyclonal Antibody
Immunogen Species	Saccharomyces cerevisiae (strain ATCC 204508 / S288c) (Baker's yeast)
Target Names	Phospho-LDB19(T607)

Image



Dot blot analysis of peptides corresponding to the immunogen was probed with Phospho-LDB19(T607) Antibody at a dilution of 1:1000. Blocking/Dilution buffer: 5% BSA/PBS. Secondary antibody: Goat polyclonal to rabbit IgG at 1/40000 dilution Exposure time: 5s.

Usage

For Research Use Only. Not for use in diagnostic or therapeutic procedures.