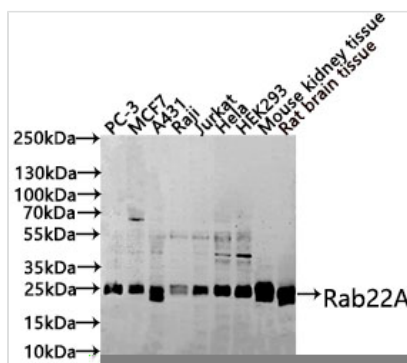




# RAB22A Recombinant Monoclonal Antibody

|                            |   |
|----------------------------|---|
| <b>Product Code</b>        | CSB-RA074083A0HU  |
| <b>Storage</b>             | Upon receipt, store at -20°C or -80°C. Avoid repeated freeze.   |
| <b>Uniprot No.</b>         | Q9UL26  |
| <b>Immunogen</b>           | A synthesized peptide derived from Human RAB22A protein   |
| <b>Species Reactivity</b>  | Human, Mouse, Rat   |
| <b>Tested Applications</b> | ELISA, WB, IHC, FC; Recommended dilution: WB:1:500-1:5000, IHC:1:50-1:200, FC:1:20-1:200                                      |
| <b>Form</b>                | Liquid  |
| <b>Conjugate</b>           | Non-conjugated  |
| <b>Storage Buffer</b>      | Rabbit IgG in 10mM phosphate buffered saline , pH 7.4, 150mM sodium chloride, 0.05% BSA, 0.02% sodium azide and 50% glycerol. |
| <b>Purification Method</b> | Affinity-chromatography   |
| <b>Isotype</b>             | Rabbit IgG  |
| <b>Clonality</b>           | Monoclonal  |
| <b>Product Type</b>        | Recombinant Antibody  |
| <b>Immunogen Species</b>   | Homo sapiens (Human)  |
| <b>Target Names</b>        | RAB22A  |
| <b>Clone No.</b>           | 11G8  |

## Image



### Western Blot

Positive WB detected in: PC-3 whole cell lysate(30µg), MCF7 whole cell lysate(30µg), A431 whole cell lysate(30µg), Raji whole cell lysate(30µg), Jurkat whole cell lysate(30µg), HeLa whole cell lysate(30µg), HEK293 whole cell lysate(30µg), Mouse kidney tissue lysate(30µg), Rat kidney tissue lysate(30µg)

All lanes: Rab22A antibody at 1:1000

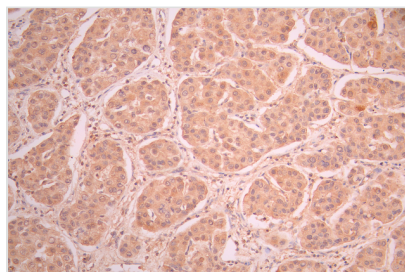
### Secondary

Goat polyclonal to rabbit IgG at 1/40000 dilution

Predicted band size: 22 kDa

Observed band size: 22 kDa

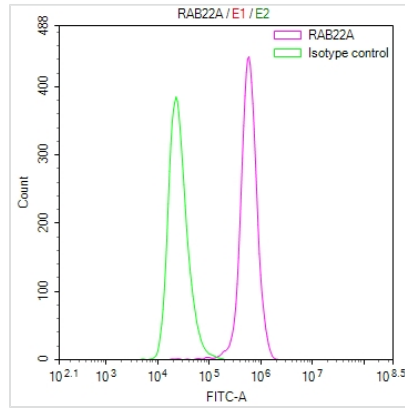
Exposure time?1min



IHC image of CSB-RA074083A0HU diluted at 1:100 and staining in paraffin-embedded human liver cancer performed on a Leica Bond<sup>TM</sup> system. After dewaxing and hydration, antigen retrieval was mediated by high pressure in a citrate buffer (pH 6.0). Section was blocked with 10% normal goat serum 30min at RT. Then primary antibody (1% BSA) was incubated at 4°C overnight. The primary is detected by a Goat



anti-rabbit polymer IgG labeled by HRP and visualized using 0.05% DAB.



Overlay Peak curve showing MCF-7 cells stained with CSB-RA074083A0HU (red line) at 1:100. The cells were fixed in 4% formaldehyde and permeated by 0.2% TritonX-100 for 10min. Then 10% normal goat serum to block non-specific protein-protein interactions followed by the antibody (1ug/1\*10<sup>6</sup>cells) for 45min at 4?. The secondary antibody used was FITC-conjugated goat anti-rabbit IgG (H+L) at 1/200 dilution for 35min at 4?. Control antibody (green line) was Rabbit IgG (1ug/1\*10<sup>6</sup>cells) used under the same conditions. Acquisition of >10,000 events was performed.

**Usage**

For Research Use Only. Not for use in diagnostic or therapeutic procedures.