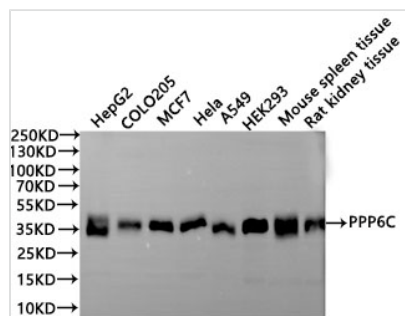




PPP6C Recombinant Monoclonal Antibody

Product Code	CSB-RA115186A0HU
Storage	Upon receipt, store at -20°C or -80°C. Avoid repeated freeze.
Uniprot No.	O00743
Immunogen	A synthesized peptide derived from Human PPP6C protein
Species Reactivity	Human, Mouse, Rat
Tested Applications	ELISA, WB; Recommended dilution: WB:1:500-1:5000
Form	Liquid
Conjugate	Non-conjugated
Storage Buffer	Rabbit IgG in 10mM phosphate buffered saline , pH 7.4, 150mM sodium chloride, 0.05% BSA, 0.02% sodium azide and 50% glycerol.
Purification Method	Affinity-chromatography
Isotype	Rabbit IgG
Clonality	Monoclonal
Product Type	Recombinant Antibody
Immunogen Species	Homo sapiens (Human)
Target Names	PPP6C
Clone No.	4E3

Image



Western Blot

Positive WB detected in: HepG2 whole cell lysate(30µg), COLO205 whole cell lysate(30µg), MCF7 whole cell lysate(30µg), HeLa whole cell lysate(30µg), A549 whole cell lysate(30µg), HEK293 whole cell lysate(30µg), Mouse spleen tissue lysate(30µg), Rat kidney tissue lysate(30µg)

All lanes: PPP6C antibody at 1:1000

Secondary

Goat polyclonal to rabbit IgG at 1/40000 dilution

Predicted band size: 35 kDa

Observed band size: 35 kDa

Exposure time?30s

Usage

For Research Use Only. Not for use in diagnostic or therapeutic procedures.