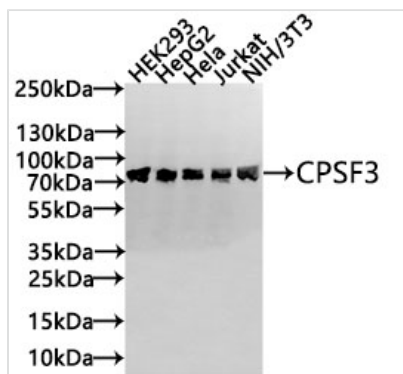




CPSF3 Recombinant Monoclonal Antibody

| | |
|----------------------------|---|
| Product Code | CSB-RA072907A0HU |
| Storage | Upon receipt, store at -20°C or -80°C. Avoid repeated freeze. |
| Uniprot No. | Q9UKF6 |
| Immunogen | A synthesized peptide derived from Human CPSF3 protein |
| Species Reactivity | Human, Mouse |
| Tested Applications | ELISA, WB, IHC; Recommended dilution: WB:1:500-1:5000, IHC:1:50-1:200 |
| Form | Liquid |
| Conjugate | Non-conjugated |
| Storage Buffer | Rabbit IgG in 10mM phosphate buffered saline , pH 7.4, 150mM sodium chloride, 0.05% BSA, 0.02% sodium azide and 50% glycerol. |
| Purification Method | Affinity-chromatography |
| Isotype | Rabbit IgG |
| Clonality | Monoclonal |
| Product Type | Recombinant Antibody |
| Immunogen Species | Homo sapiens (Human) |
| Target Names | CPSF3 |
| Clone No. | 7B8 |

Image

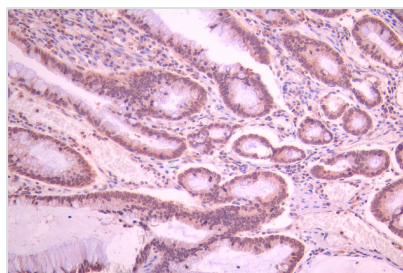


Western Blot

Positive WB detected in: HEK293 whole cell lysate(30µg), HepG2 whole cell lysate(30µg), HeLa whole cell lysate(30µg), Jurkat whole cell lysate(30µg), NIH/3T3 whole cell lysate(30µg)
All lanes: CPSF3 antibody at 1:1000

Secondary

Goat polyclonal to rabbit IgG at 1/40000 dilution
Predicted band size: 77 kDa
Observed band size: 77 kDa
Exposure time?3min



IHC image of CSB-RA072907A0HU diluted at 1:100 and staining in paraffin-embedded human gastric cancer performed on a Leica Bond™ system. After dewaxing and hydration, antigen retrieval was mediated by high pressure in a citrate buffer (pH 6.0). Section was blocked with 10% normal goat serum 30min at RT. Then primary antibody (1% BSA) was incubated at 4°C overnight. The primary is detected by a Goat anti-rabbit polymer IgG labeled by HRP and visualized using 0.05% DAB.

**Usage**

For Research Use Only. Not for use in diagnostic or therapeutic procedures.