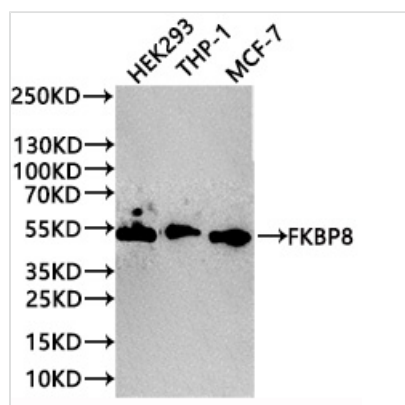




FKBP8 Recombinant Monoclonal Antibody

Product Code	CSB-RA120685A0HU
Storage	Upon receipt, store at -20°C or -80°C. Avoid repeated freeze.
Uniprot No.	Q14318
Immunogen	A synthesized peptide derived from Human FKBP8 protein
Species Reactivity	Human
Tested Applications	ELISA, WB, FC; Recommended dilution: WB:1:500-1:5000, FC:1:20-1:200
Form	Liquid
Conjugate	Non-conjugated
Storage Buffer	Rabbit IgG in 10mM phosphate buffered saline , pH 7.4, 150mM sodium chloride, 0.05% BSA, 0.02% sodium azide and 50% glycerol.
Purification Method	Affinity-chromatography
Isotype	Rabbit IgG
Clonality	Monoclonal
Product Type	Recombinant Antibody
Immunogen Species	Homo sapiens (Human)
Target Names	FKBP8
Clone No.	18G7

Image



Western Blot

Positive WB detected in: HEK293 whole cell lysate(30µg), THP-1 whole cell lysate(30µg), MCF7 whole cell lysate(30µg)

All lanes: FKBP8 antibody at 1:1000

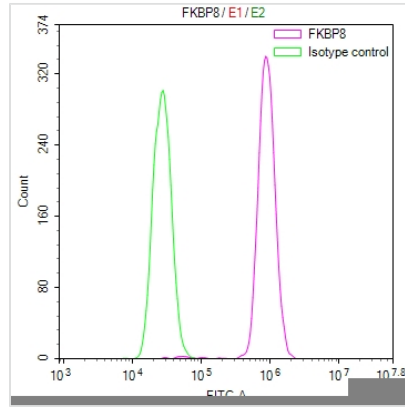
Secondary

Goat polyclonal to rabbit IgG at 1/40000 dilution

Predicted band size: 45 kDa

Observed band size: 52 kDa

Exposure time?3min



Overlay Peak curve showing Raji cells stained with CSB-RA120685A0HU (red line) at 1:100. The cells were fixed in 4% formaldehyde and permeated by 0.2% TritonX-100 for 10min. Then 10% normal goat serum to block non-specific protein-protein interactions followed by the antibody (1ug/1*10⁶cells) for 45min at 4?. The secondary antibody used was FITC-conjugated goat anti-rabbit IgG (H+L) at 1/200 dilution for 35min at 4?. Control antibody (green line) was Rabbit IgG (1ug/1*10⁶cells) used under the same conditions. Acquisition of >10,000 events was performed.

Usage

For Research Use Only. Not for use in diagnostic or therapeutic procedures.