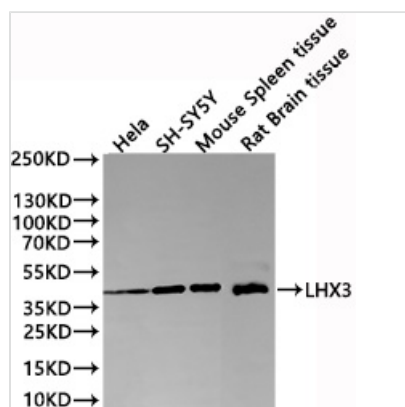




# LHX3 Recombinant Monoclonal Antibody

|                            |   |
|----------------------------|---|
| <b>Product Code</b>        | CSB-RA123796A0HU  |
| <b>Storage</b>             | Upon receipt, store at -20°C or -80°C. Avoid repeated freeze.   |
| <b>Uniprot No.</b>         | Q9UBR4  |
| <b>Immunogen</b>           | A synthesized peptide derived from Human LHX3 protein   |
| <b>Species Reactivity</b>  | Human, Mouse, Rat   |
| <b>Tested Applications</b> | ELISA, WB; Recommended dilution: WB:1:500-1:5000  |
| <b>Form</b>                | Liquid  |
| <b>Conjugate</b>           | Non-conjugated  |
| <b>Storage Buffer</b>      | Rabbit IgG in 10mM phosphate buffered saline , pH 7.4, 150mM sodium chloride, 0.05% BSA, 0.02% sodium azide and 50% glycerol. |
| <b>Purification Method</b> | Affinity-chromatography   |
| <b>Isotype</b>             | Rabbit IgG  |
| <b>Clonality</b>           | Monoclonal  |
| <b>Product Type</b>        | Recombinant Antibody  |
| <b>Immunogen Species</b>   | Homo sapiens (Human)  |
| <b>Target Names</b>        | LHX3  |
| <b>Clone No.</b>           | 10C11   |

## Image



### Western Blot

Positive WB detected in: HeLa whole cell lysate(30µg), SH-SY5Y whole cell lysate(30µg), Mouse Spleen tissue whole cell lysate(30µg), Rat Brain tissue whole cell lysate(30µg)

All lanes: LHX3 antibody at 1:1000

### Secondary

Goat polyclonal to rabbit IgG at 1/40000 dilution

Predicted band size: 43 kDa

Observed band size: 43 kDa

Exposure time?2min

## Usage

For Research Use Only. Not for use in diagnostic or therapeutic procedures.