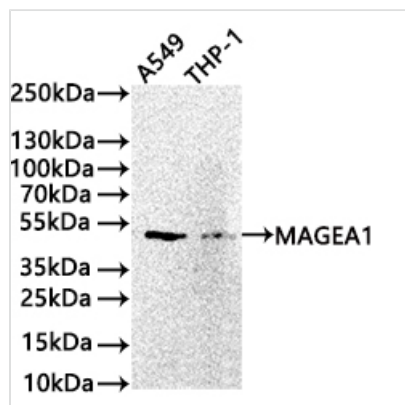




MAGEA1 Recombinant Monoclonal Antibody

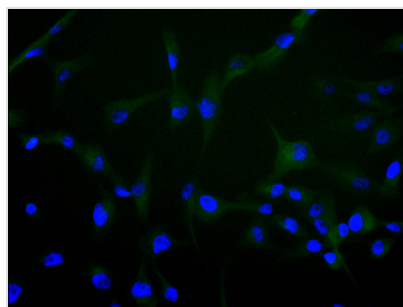
| | |
|----------------------------|---|
| Product Code | CSB-RA786406A0HU |
| Storage | Upon receipt, store at -20°C or -80°C. Avoid repeated freeze. |
| Uniprot No. | P43355 |
| Immunogen | A synthesized peptide derived from Human MAGEA1 protein |
| Species Reactivity | Human |
| Tested Applications | ELISA, WB, IF; Recommended dilution: WB:1:500-1:5000, IF:1:20-1:200 |
| Form | Liquid |
| Conjugate | Non-conjugated |
| Storage Buffer | Rabbit IgG in 10mM phosphate buffered saline , pH 7.4, 150mM sodium chloride, 0.05% BSA, 0.02% sodium azide and 50% glycerol. |
| Purification Method | Affinity-chromatography |
| Isotype | Rabbit IgG |
| Clonality | Monoclonal |
| Product Type | Recombinant Antibody |
| Immunogen Species | Homo sapiens (Human) |
| Target Names | MAGEA1 |
| Clone No. | 19D9 |

Image



Western Blot

Positive WB detected in:A549 whole cell lysate(30µg), THP-1 whole cell lysate(30µg)
 All lanes: Lipoma preferred partner antibody at 1:1000
 Secondary
 Goat polyclonal to rabbit IgG at 1/40000 dilution
 Predicted band size: 34/46 kDa
 Observed band size: 46 kDa
 Exposure time?180s



Immunofluorescence staining of U251 cell with CSB-RA786406A0HU at 1:50 ,counter-stained with DAPI. The cells were fixed in 4% formaldehyde, permeabilized using 0.2% Triton X-100 and blocked in 10% normal Goat Serum. The cells were then incubated with the antibody overnight at 4°C. The secondary antibody was Alexa Fluor 488-conjugated AffiniPure Goat Anti-Rabbit IgG(H+L).



Usage

For Research Use Only. Not for use in diagnostic or therapeutic procedures.