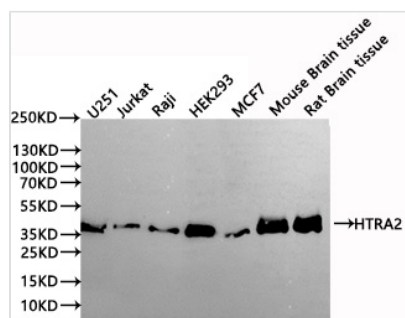




HTRA2 Recombinant Monoclonal Antibody

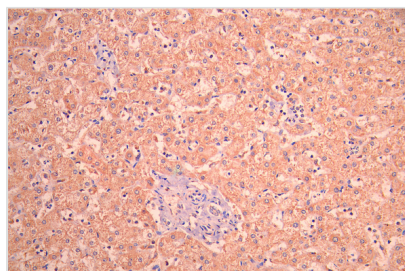
Product Code	CSB-RA980862A0HU
Storage	Upon receipt, store at -20°C or -80°C. Avoid repeated freeze.
Uniprot No.	O43464
Immunogen	A synthesized peptide derived from Human HTRA2 protein
Species Reactivity	Human, Mouse, Rat
Tested Applications	ELISA, WB, IHC, IF, FC; Recommended dilution: WB:1:500-1:5000, IHC:1:50-1:200, IF:1:20-1:200, FC:1:20-1:200
Form	Liquid
Conjugate	Non-conjugated
Storage Buffer	Rabbit IgG in 10mM phosphate buffered saline , pH 7.4, 150mM sodium chloride, 0.05% BSA, 0.02% sodium azide and 50% glycerol.
Purification Method	Affinity-chromatography
Isotype	Rabbit IgG
Clonality	Monoclonal
Product Type	Recombinant Antibody
Immunogen Species	Homo sapiens (Human)
Target Names	HTRA2
Clone No.	16F10

Image



Western Blot

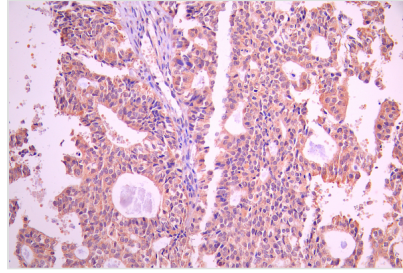
Positive WB detected in: U251 whole cell lysate(30µg), Jurkat whole cell lysate(30µg), Raji whole cell lysate(30µg), HEK293 whole cell lysate(30µg), MCF7 whole cell lysate(30µg), Mouse Brain tissue whole cell lysate(30µg), Rat Brain tissue whole cell lysate(30µg)
 All lanes: HTRA2 antibody at 1:1000
 Secondary
 Goat polyclonal to rabbit IgG at 1/40000 dilution
 Predicted band size: 49 kDa
 Observed band size: 38 kDa
 Exposure time?3min



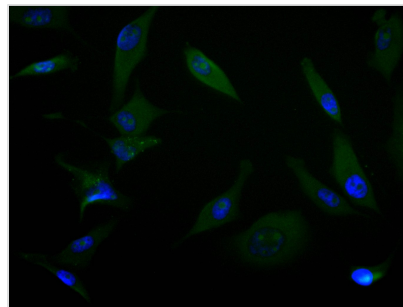
IHC image of CSB-RA980862A0HU diluted at 1:100 and staining in paraffin-embedded human liver tissue performed on a Leica Bond™ system. After dewaxing and hydration, antigen retrieval was mediated by high pressure in a citrate buffer (pH 6.0). Section was blocked with 10% normal goat serum 30min at RT. Then primary antibody (1% BSA) was incubated at 4°C overnight. The primary is detected by a Goat anti-rabbit polymer IgG labeled by HRP and



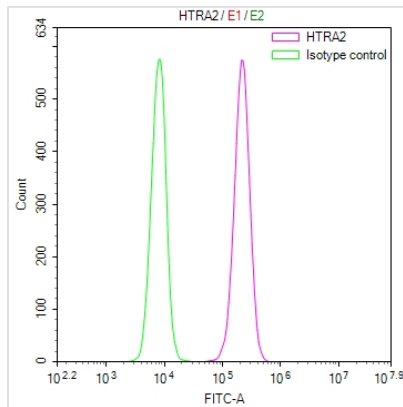
visualized using 0.05% DAB.



IHC image of CSB-RA980862A0HU diluted at 1:100 and staining in paraffin-embedded human ovarian cancer performed on a Leica Bond™ system. After dewaxing and hydration, antigen retrieval was mediated by high pressure in a citrate buffer (pH 6.0). Section was blocked with 10% normal goat serum 30min at RT. Then primary antibody (1% BSA) was incubated at 4°C overnight. The primary is detected by a Goat anti-rabbit polymer IgG labeled by HRP and visualized using 0.05% DAB.



Immunofluorescence staining of pc-3 cell with CSB-RA980862A0HU at 1:50, counter-stained with DAPI. The cells were fixed in 4% formaldehyde, permeabilized using 0.2% Triton X-100 and blocked in 10% normal Goat Serum. The cells were then incubated with the antibody overnight at 4°C. The secondary antibody was Alexa Fluor 488-conjugated AffiniPure Goat Anti-Rabbit IgG(H+L).



Overlay Peak curve showing Raji cells stained with CSB-RA980862A0HU (red line) at 1:100. The cells were fixed in 4% formaldehyde and permeated by 0.2% TritonX-100 for 10min. Then 10% normal goat serum to block non-specific protein-protein interactions followed by the antibody (1ug/1*10⁶cells) for 45min at 4?. The secondary antibody used was FITC-conjugated goat anti-rabbit IgG (H+L) at 1/200 dilution for 35min at 4?. Control antibody (green line) was Rabbit IgG (1ug/1*10⁶cells) used under the same conditions. Acquisition of >10,000 events was performed.

Usage

For Research Use Only. Not for use in diagnostic or therapeutic procedures.