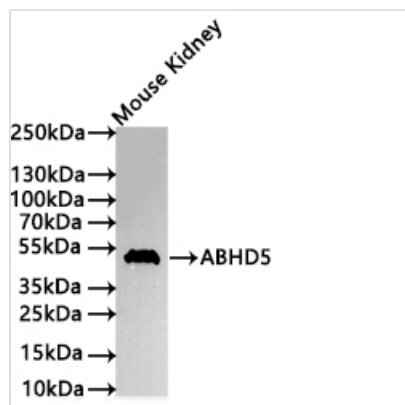




ABHD5 Recombinant Monoclonal Antibody

Product Code	CSB-RA038671A0HU
Storage	Upon receipt, store at -20°C or -80°C. Avoid repeated freeze.
Uniprot No.	Q8WTS1
Immunogen	A synthesized peptide derived from Human ABHD5 protein
Species Reactivity	Human, Mouse
Tested Applications	ELISA, WB; Recommended dilution: WB:1:500-1:5000
Form	Liquid
Conjugate	Non-conjugated
Storage Buffer	Rabbit IgG in 10mM phosphate buffered saline , pH 7.4, 150mM sodium chloride, 0.05% BSA, 0.02% sodium azide and 50% glycerol.
Purification Method	Affinity-chromatography
Isotype	Rabbit IgG
Clonality	Monoclonal
Product Type	Recombinant Antibody
Immunogen Species	Homo sapiens (Human)
Target Names	ABHD5
Clone No.	4A5

Image



Western Blot

Positive WB detected in: Mouse Kidney whole cell lysate (30µg)

All lanes: Lipoma preferred partner antibody at 1:1000

Secondary

Goat polyclonal to rabbit IgG at 1/40000 dilution

Predicted band size: 39/45 kDa

Observed band size: 45 kDa

Exposure time? 120s

Usage

For Research Use Only. Not for use in diagnostic or therapeutic procedures.