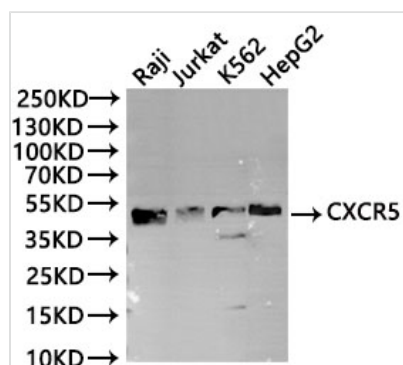




# RACK1 Recombinant Monoclonal Antibody

<b>Product Code</b>	CSB-RA144409A0HU
<b>Storage</b>	Upon receipt, store at -20°C or -80°C. Avoid repeated freeze.
<b>Uniprot No.</b>	P63244
<b>Immunogen</b>	A synthesized peptide derived from Human RACK1 protein
<b>Species Reactivity</b>	Human, Mouse
<b>Tested Applications</b>	ELISA, WB, FC; Recommended dilution: WB:1:500-1:5000, FC:1:20-1:200
<b>Form</b>	Liquid
<b>Conjugate</b>	Non-conjugated
<b>Storage Buffer</b>	Rabbit IgG in 10mM phosphate buffered saline , pH 7.4, 150mM sodium chloride, 0.05% BSA, 0.02% sodium azide and 50% glycerol.
<b>Purification Method</b>	Affinity-chromatography
<b>Isotype</b>	Rabbit IgG
<b>Clonality</b>	Monoclonal
<b>Product Type</b>	Recombinant Antibody
<b>Immunogen Species</b>	Homo sapiens (Human)
<b>Target Names</b>	RACK1
<b>Clone No.</b>	1F9

## Image



### Western Blot

Positive WB detected in: HepG2 whole cell lysate(30µg), HEK293 whole cell lysate(30µg), MCF7 whole cell lysate(30µg), Jurkat whole cell lysate(30µg), CACO-2 whole cell lysate(30µg), K562 whole cell lysate(30µg), Mouse liver tissue lysate(30µg)

All lanes: RACK1 antibody at 1:1000

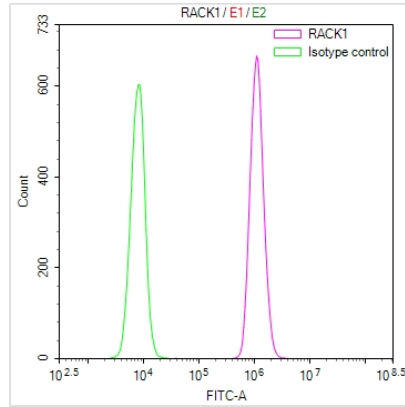
Secondary

Goat polyclonal to rabbit IgG at 1/40000 dilution

Predicted band size: 35 kDa

Observed band size:35 kDa

Exposure time?1min



Overlay Peak curve showing Raji cells stained with CSB-RA144409A0HU (red line) at 1:100. The cells were fixed in 4% formaldehyde and permeated by 0.2% TritonX-100 for 10min. Then 10% normal goat serum to block non-specific protein-protein interactions followed by the antibody (1ug/1\*10<sup>6</sup>cells) for 45min at 4?. The secondary antibody used was FITC-conjugated goat anti-rabbit IgG (H+L) at 1/200 dilution for 35min at 4?. Control antibody (green line) was Rabbit IgG (1ug/1\*10<sup>6</sup>cells) used under the same conditions. Acquisition of >10,000 events was performed.

**Usage**

For Research Use Only. Not for use in diagnostic or therapeutic procedures.