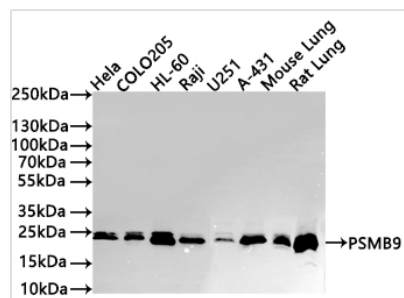




PSMB9 Recombinant Monoclonal Antibody

Product Code	CSB-RA153532A0HU
Storage	Upon receipt, store at -20°C or -80°C. Avoid repeated freeze.
Uniprot No.	P28065
Immunogen	A synthesized peptide derived from Human PSMB9 protein
Species Reactivity	Human, Mouse, Rat
Tested Applications	ELISA, WB; Recommended dilution: WB:1:500-1:5000
Form	Liquid
Conjugate	Non-conjugated
Storage Buffer	Rabbit IgG in 10mM phosphate buffered saline , pH 7.4, 150mM sodium chloride, 0.05% BSA, 0.02% sodium azide and 50% glycerol.
Purification Method	Affinity-chromatography
Isotype	Rabbit IgG
Clonality	Monoclonal
Product Type	Recombinant Antibody
Immunogen Species	Homo sapiens (Human)
Target Names	PSMB9
Clone No.	23H11

Image



Western Blot

Positive WB detected in: HeLa whole cell lysate(30µg), COLO205 whole cell lysate(30µg), HL60 whole cell lysate(30µg), Raji whole cell lysate(30µg), U251 whole cell lysate(30µg), A-431 whole cell lysate(30µg), Mouse Lung whole cell lysate(30µg), Rat Lung whole cell lysate(30µg)

All lanes: Lipoma preferred partner antibody at 1:1000

Secondary

Goat polyclonal to rabbit IgG at 1/40000 dilution

Predicted band size: 23/21 kDa

Observed band size: 21 kDa

Exposure time?120s

Usage

For Research Use Only. Not for use in diagnostic or therapeutic procedures.