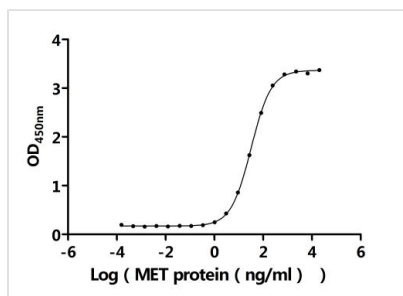




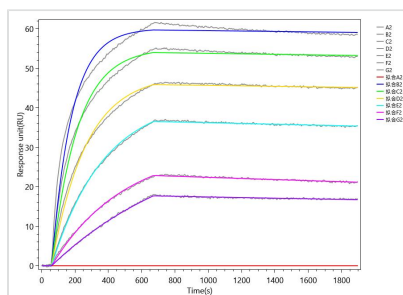
MET Recombinant Monoclonal Antibody

Product Code	CSB-RA013714MA2HU
Storage	Upon receipt, store at -20°C or -80°C. Avoid repeated freeze.
Uniprot No.	P08581
Immunogen	Recombinant Human MET protein
Species Reactivity	Human
Tested Applications	ELISA, IF, SPR; Recommended dilution: IF:1:20-1:200
Form	Liquid
Conjugate	Non-conjugated
Storage Buffer	Preservative: 0.03% Proclin 300 Constituents: 50% Glycerol, 0.01M PBS, PH 7.4
Purification Method	Affinity-chromatography
Isotype	hIgG4
Clonality	Monoclonal
Product Type	Recombinant Antibody
Immunogen Species	Homo sapiens (Human)
Target Names	MET
Clone No.	18D3

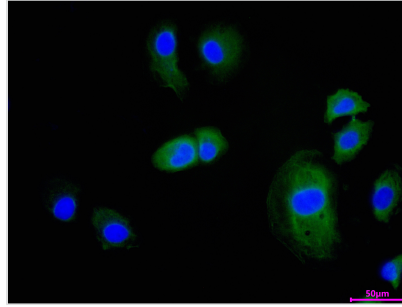
Image



The Binding Activity of Human MET with Anti-MET recombinant antibody
Activity: Measured by its binding ability in a functional ELISA. Immobilized Anti-MET recombinant antibody at 2 µg/mL can bind Biotinylated Human MET (CSB-MP013714HU-B). The EC50 is 30.49-33.61 ng/mL.



The Binding Activity of Human MET with Anti-MET Recombinant Antibody
Activity: MET Recombinant Monoclonal Antibody captured on Protein A Chip can bind Recombinant Human MET (CSB-MP013714HU-B) with an affinity constant of 0.402 nM as detected by MetaSPR Assay (WeSPRTM 200).



Immunofluorescence staining of HeLa cell with CSB-RA013714MA2HU at 1:30 ,counter-stained with DAPI. The cells were fixed in 4% formaldehyde and blocked in 10% normal Goat Serum. The cells were then incubated with the antibody overnight at 4°C. The secondary antibody was Fluorescein (FITC) AffiniPure Goat Anti-Human IgG, Fcγ fragment specific.

Usage

For Research Use Only. Not for use in diagnostic or therapeutic procedures.