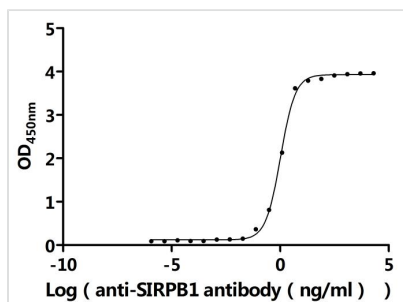




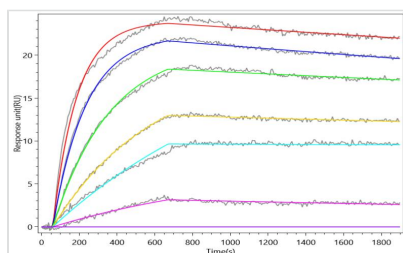
SIRPB1 Recombinant Monoclonal Antibody

Product Code	CSB-RA021335MA1HU
Storage	Upon receipt, store at -20°C or -80°C. Avoid repeated freeze.
Uniprot No.	O00241
Immunogen	Recombinant Human SIRPB1 protein
Species Reactivity	Human
Tested Applications	ELISA, SPR; Recommended dilution: ELISA:1:1000-1:10000
Form	Liquid
Conjugate	Non-conjugated
Storage Buffer	Preservative: 0.03% Proclin 300 Constituents: 50% Glycerol, 0.01M PBS, PH 7.4
Purification Method	Affinity-chromatography
Isotype	hIgG1
Clonality	Monoclonal
Product Type	Recombinant Antibody
Immunogen Species	Homo sapiens (Human)
Target Names	SIRPB1
Clone No.	14H12

Image



The Binding Activity of Human SIRPB1 with Anti-SIRPB1 recombinant antibody
Activity: Measured by its binding ability in a functional ELISA. Immobilized Human SIRPB1(CSB-MP021335HUd7) at 2 µg/mL can bind anti-SIRPB1 recombinant antibody. The EC50 is 0.9675-1.114 ng/mL.



The Binding Activity of Human SIRPB1 with Anti-SIRPB1 recombinant antibody
Activity: SIRPB1 Recombinant Monoclonal Antibody captured on Protein A Chip can bind Human SIRPB1(CSB-MP021335HUd7) with an affinity constant of 0.245 nM as detected by MetaSPR Assay (WeSPRTM 200).

Usage

For Research Use Only. Not for use in diagnostic or therapeutic procedures.