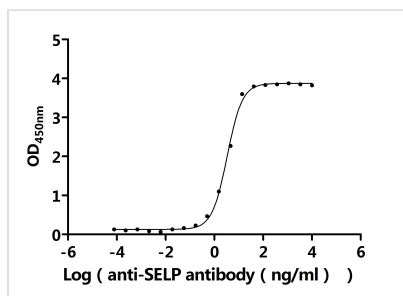




SELP Recombinant Monoclonal Antibody

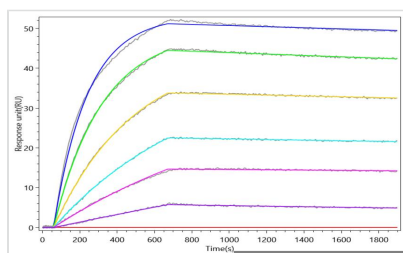
| | |
|----------------------------|--|
| Product Code | CSB-RA020978MA2HU |
| Storage | Upon receipt, store at -20°C or -80°C. Avoid repeated freeze. |
| Uniprot No. | P16109 |
| Immunogen | Recombinant Human SELP protein |
| Species Reactivity | Human |
| Tested Applications | ELISA, SPR; Recommended dilution: ELISA:1:1000-1:10000 |
| Form | Liquid |
| Conjugate | Non-conjugated |
| Storage Buffer | Preservative: 0.03% Proclin 300 Constituents: 50% Glycerol, 0.01M PBS, PH 7.4 |
| Purification Method | Affinity-chromatography |
| Isotype | hIgG4 |
| Clonality | Monoclonal |
| Product Type | Recombinant Antibody |
| Immunogen Species | Homo sapiens (Human) |
| Target Names | SELP |
| Clone No. | 4B2 |

Image



The Binding Activity of Human SELP with Anti-SELP Recombinant Antibody

Activity: Measured by its binding ability in a functional ELISA. Immobilized Human SELP (CSB-MP020978HUd7) at 2 µg/mL can bind Anti-SELP recombinant antibody. The EC50 is 3.120-3.578 ng/mL.



The Binding Activity of Human SELP with Anti-SELP Recombinant Antibody

Activity: SELP Recombinant Monoclonal Antibody captured on Protein A Chip can bind Recombinant Human SELP (CSB-MP020978HUd7) with an affinity constant of 0.956 nM as detected by MetaSPR Assay (WeSPRTM 200).

Usage

For Research Use Only. Not for use in diagnostic or therapeutic procedures.