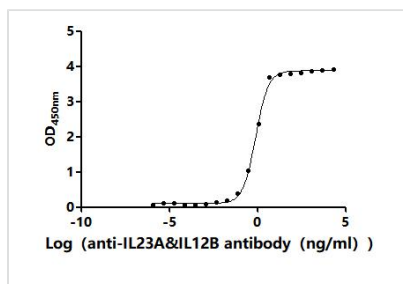




# IL12B Recombinant Monoclonal Antibody

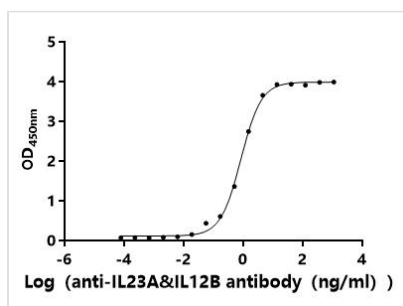
<b>Product Code</b>	CSB-RA011587MA2HU
<b>Storage</b>	Upon receipt, store at -20°C or -80°C. Avoid repeated freeze.
<b>Uniprot No.</b>	P29460
<b>Immunogen</b>	Recombinant Human IL12B protein
<b>Species Reactivity</b>	Human, Macaca fascicularis
<b>Tested Applications</b>	ELISA, SPR; Recommended dilution: ELISA:1:1000-1:10000
<b>Form</b>	Liquid
<b>Conjugate</b>	Non-conjugated
<b>Storage Buffer</b>	Preservative: 0.03% Proclin 300 Constituents: 50% Glycerol, 0.01M PBS, PH 7.4
<b>Purification Method</b>	Affinity-chromatography
<b>Isotype</b>	hIgG1
<b>Clonality</b>	Monoclonal
<b>Product Type</b>	Recombinant Antibody
<b>Immunogen Species</b>	Homo sapiens (Human)
<b>Target Names</b>	IL12B
<b>Clone No.</b>	5C3

## Image



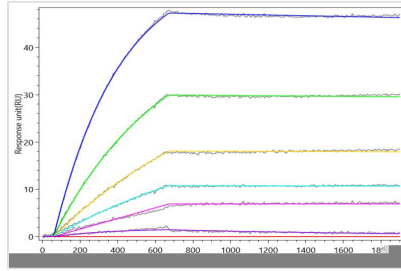
The Binding Activity of Human IL23A&IL12B with Anti-IL23A&IL12B Recombinant Antibody

Activity: Measured by its binding ability in a functional ELISA. Immobilized Human IL23A&IL12B (CSB-MP6901HU) at 2 µg/mL can bind Anti-IL23A&IL12B recombinant antibody. The EC50 is 0.7293-0.8610 ng/mL.



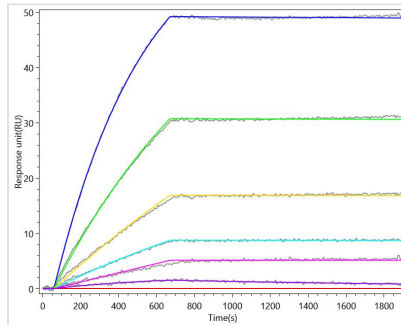
The Binding Activity of Macaca fascicularis IL23A&IL12B with Anti-IL23A&IL12B recombinant antibody

Activity: Measured by its binding ability in a functional ELISA. Immobilized Macaca fascicularis IL23A&IL12B (CSB-MP7054MOV) at 2 µg/mL can bind anti-IL23A&IL12B recombinant antibody. The EC50 is 0.7723-0.9250 ng/mL.



The Binding Activity of Human IL23A&IL12B with Anti-IL23A&IL12B Recombinant Antibody

Activity:IL23A&IL12B Recombinant Monoclonal Antibody (CSB-RA011587MA2HU) captured on Protein A Chip can bind Recombinant Human IL23A&IL12B with an affinity constant of 0.158 nM as detected by MetaSPR Assay (WeSPRTM 200).



The Binding Activity of Macaca fascicularis IL23A&IL12B with Anti-IL23A&IL12B recombinant antibody

Activity:IL23A&IL12B Recombinant Monoclonal Antibody captured on Protein A Chip can bind Macaca fascicularis IL23A&IL12B(CSB-MP7054MOV) with an affinity constant of 0.27 nM as detected by MetaSPR Assay (WeSPRTM 200).

**Usage**

For Research Use Only. Not for use in diagnostic or therapeutic procedures.