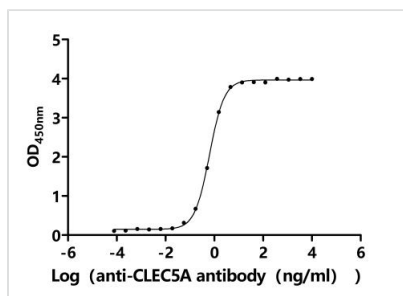




# CLEC5A Recombinant Monoclonal Antibody

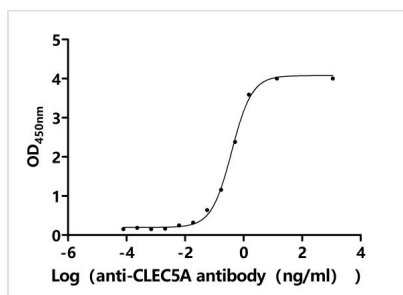
<b>Product Code</b>	CSB-RA873686MA1HU
<b>Storage</b>	Upon receipt, store at -20°C or -80°C. Avoid repeated freeze.
<b>Uniprot No.</b>	Q9NY25
<b>Immunogen</b>	Recombinant Human CLEC5A protein
<b>Species Reactivity</b>	Human
<b>Tested Applications</b>	ELISA, FC, SPR; Recommended dilution: FC:1:20-1:200
<b>Form</b>	Liquid
<b>Conjugate</b>	Non-conjugated
<b>Storage Buffer</b>	Preservative: 0.03% Proclin 300 Constituents: 50% Glycerol, 0.01M PBS, PH 7.4
<b>Purification Method</b>	Affinity-chromatography
<b>Isotype</b>	hIgG1
<b>Clonality</b>	Monoclonal
<b>Product Type</b>	Recombinant Antibody
<b>Immunogen Species</b>	Homo sapiens (Human)
<b>Target Names</b>	CLEC5A
<b>Clone No.</b>	22D7

## Image



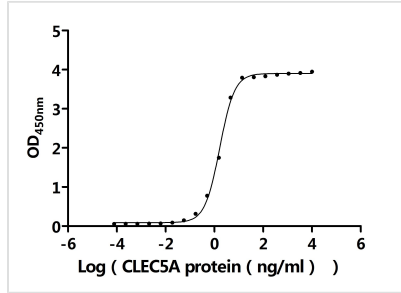
The Binding Activity of Human CLEC5A with Anti-CLEC5A Recombinant Antibody

Activity: Measured by its binding ability in a functional ELISA. Immobilized Human CLEC5A (CSB-MP873686HU) at 2 µg/mL can bind Anti-CLEC5A recombinant antibody. The EC50 is 0.5964-0.6743 ng/mL.



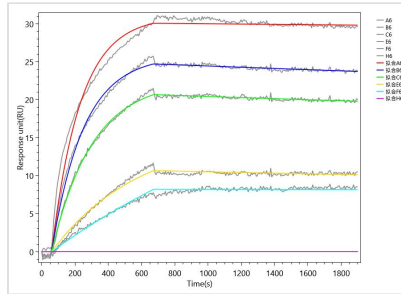
The Binding Activity of Human CLEC5A with Anti-CLEC5A Recombinant Antibody

Activity: Measured by its binding ability in a functional ELISA. Immobilized Human CLEC5A (CSB-MP873686HUi4-B) at 2 µg/mL can bind Anti-CLEC5A recombinant antibody. The EC50 is 0.3246-0.4731 ng/mL.



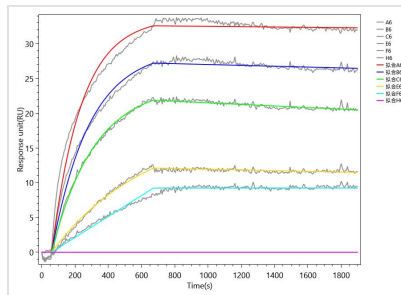
The Binding Activity of Human CLEC5A with Anti-CLEC5A Recombinant Antibody

Activity: Measured by its binding ability in a functional ELISA. Immobilized Human CLEC5A (CSB-MP873686HU4-B) at 2  $\mu$ g/mL can bind Anti-CLEC5A recombinant antibody. The EC50 is 1.553-1.763 ng/mL.



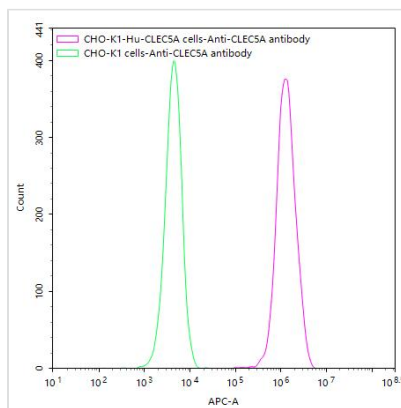
The Binding Activity of Human CLEC5A with Anti-CLEC5A Recombinant Antibody

Activity: CLEC5A Recombinant Monoclonal Antibody captured on Protein A Chip can bind Recombinant Human CLEC5A (CSB-MP873686HU) with an affinity constant of 0.285 nM as detected by MetaSPR Assay (WeSPRTM 200).



The Binding Activity of Human CLEC5A with Anti-CLEC5A Recombinant Antibody

Activity: CLEC5A Recombinant Monoclonal Antibody captured on Protein A Chip can bind Recombinant Human CLEC5A (CSB-MP873686HU4-B) with an affinity constant of 0.444 nM as detected by MetaSPR Assay (WeSPRTM 200).



Untransfected CHOK1\*10<sup>6</sup>cells), washed and then followed by APC-conjugated anti-Human IgG Fc antibody and analyzed with flow cytometry.

**Usage**

For Research Use Only. Not for use in diagnostic or therapeutic procedures.