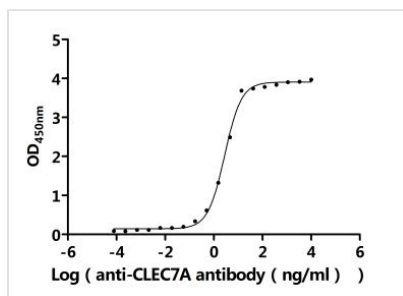




CLEC7A Recombinant Monoclonal Antibody

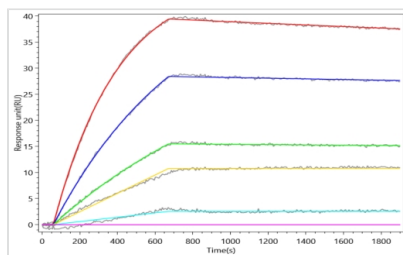
Product Code	CSB-RA883623MA1HU
Storage	Upon receipt, store at -20°C or -80°C. Avoid repeated freeze.
Uniprot No.	Q9BXN2
Immunogen	Recombinant Human CLEC7A protein
Species Reactivity	Human, Macaca fascicularis
Tested Applications	ELISA, FC, SPR; Recommended dilution: FC:1:20-1:200
Form	Liquid
Conjugate	Non-conjugated
Storage Buffer	Preservative: 0.03% Proclin 300 Constituents: 50% Glycerol, 0.01M PBS, PH 7.4
Purification Method	Affinity-chromatography
Isotype	hIgG4
Clonality	Monoclonal
Product Type	Recombinant Antibody
Immunogen Species	Homo sapiens (Human)
Target Names	CLEC7A
Clone No.	5G7

Image



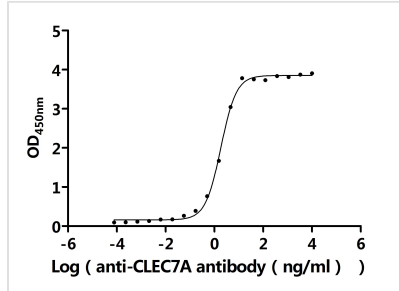
The Binding Activity of Macaca fascicularis CLEC7A with Anti-CLEC7A Recombinant Antibody

Activity: Measured by its binding ability in a functional ELISA. Immobilized Macaca fascicularis CLEC7A (CSB-MP8038MOV) at 2 µg/mL can bind Anti-CLEC7A recombinant antibody. The EC₅₀ is 2.544-3.020 ng/mL.



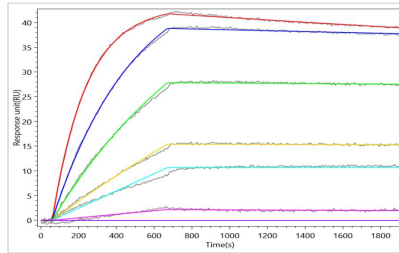
The Binding Activity of Macaca fascicularis CLEC7A with Anti-CLEC7A Recombinant Antibody

Activity: CLEC7A Recombinant Monoclonal Antibody captured on Protein A Chip can bind Recombinant Macaca fascicularis CLEC7A (CSB-MP8038MOV) with an affinity constant of 0.537 nM as detected by MetaSPR Assay (WeSPRTM 200).



The Binding Activity of Human CLEC7A with Anti-CLEC7A Recombinant Antibody

Activity: Measured by its binding ability in a functional ELISA. Immobilized Human CLEC7A (CSB-MP883623HU) at 2 $\mu\text{g}/\text{mL}$ can bind Anti-CLEC7A recombinant antibody. The EC50 is 1.715-1.991 ng/mL.



The Binding Activity of Human CLEC7A with Anti-CLEC7A Recombinant Antibody

Activity: CLEC7A Recombinant Monoclonal Antibody captured on Protein A Chip can bind Recombinant Human CLEC7A (CSB-MP883623HU) with an affinity constant of 0.807 nM as detected by MetaSPR Assay (WeSPRTM 200).



Untransfected Jurkat cells (green line) and transfected Human CLEC7A Reporter Jurkat stable cells (red line) were stained with anti-CLEC7A antibody (CSB-RA883623MA1* 10^6 cells), washed and then followed by APC-conjugated anti-Human IgG Fc antibody and analyzed with flow cytometry.

Usage

For Research Use Only. Not for use in diagnostic or therapeutic procedures.