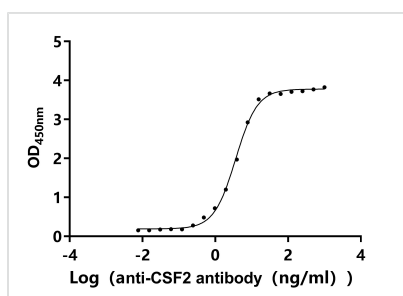




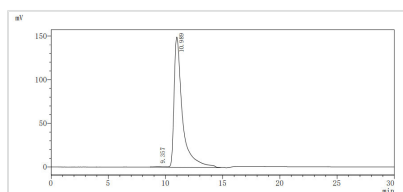
# CSF2 (Namilumab Biosimilar) Recombinant Monoclonal Antibody

<b>Product Code</b>	CSB-RA006045MA3HU
<b>Storage</b>	Upon receipt, store at -20°C or -80°C. Avoid repeated freeze.
<b>Uniprot No.</b>	P04141
<b>Immunogen</b>	Recombinant Human CSF2 protein
<b>Species Reactivity</b>	Human
<b>Tested Applications</b>	ELISA, FACS
<b>Form</b>	Liquid
<b>Conjugate</b>	Non-conjugated
<b>Storage Buffer</b>	0.01M PBS, pH 7.4
<b>Purification Method</b>	Affinity-chromatography
<b>Clonality</b>	Monoclonal
<b>Product Type</b>	Biosimilar Antibody
<b>Immunogen Species</b>	Homo sapiens (Human)
<b>Target Names</b>	CSF2
<b>Accession NO.</b>	5C7

## Image



The Binding Activity of Human CSF2 with Anti-CSF2 recombinant antibody  
 Activity: Measured by its binding ability in a functional ELISA. Immobilized Human CSF2 (CSB-MP006045HU) at 2 µg/mL can bind Anti-CSF2 recombinant antibody. The EC<sub>50</sub> is 3.427-3.872 ng/mL.



The purity of CSF2 was greater than 95% as determined by SEC-HPLC