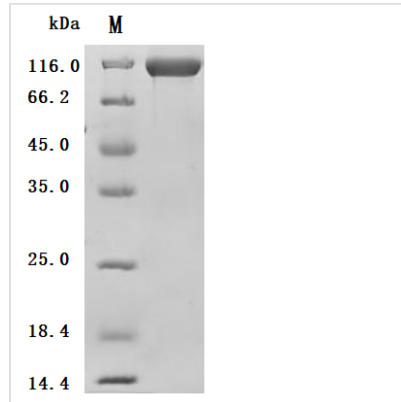


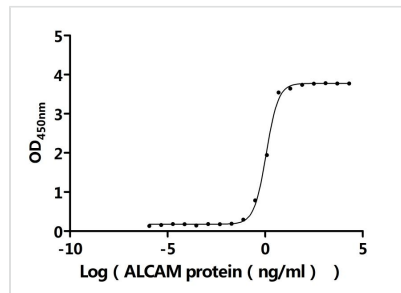


Recombinant Human CD166 antigen (ALCAM), partial (Active)

Product Code	CSB-MP614444HU1
Abbreviation	Recombinant Human ALCAM protein, partial (Active)
Storage	The shelf life is related to many factors, storage state, buffer ingredients, storage temperature and the stability of the protein itself. Generally, the shelf life of liquid form is 6 months at -20?/-80?. The shelf life of lyophilized form is 12 months at -20?/-80?.
Uniprot No.	Q13740
Form	Lyophilized powder
Storage Buffer	Lyophilized from a 0.2 μm sterile filtered PBS, 6% Trehalose, pH 7.4
Product Type	Recombinant Protein
Immunogen Species	Homo sapiens (Human)
Biological Activity	Measured by its binding ability in a functional ELISA. Immobilized Human CD6 (CSB-MP326953HU) at 2 μg/mL can bind Human ALCAM. The EC50 is 1.049-1.226 ng/mL.
Purity	Greater than 95% as determined by SDS-PAGE.
Sequence	WYTVNSAYGDTIIIPCRLDVPQNL MFGKWKYEKPDGSPVFI AFRSSTKKS VQY DDVPEYKDR LNLSEN YTL SISR NISDEKRFV CMLVTE DNVFEAPTIVK VFKQP SKPEIVSKALFLETEQLK KLGDCISEDSY PDGNITWYRNGKVLHPLEGAVVIIFK KEMDPVTQLYTMTSTLEYKTTKADIQMPFTCSVTYYGPSGQKTIHSEQAVFDIY YPTEQVTIQVLPKNAIKEGDNITLKCLGNGNPPPEEFLFYLPGQPEGIRSSNTY TLTDVRRNATGDYKCSLIDKKS MIASAITVHYLDLSLNP SG EVTRQIGDALPVS CTISASRNATV VWMKDNIRLRSSPSFSSLHYQDAGNYVCETALQEVEGLKKRE SLTLIVEGKPKIQIKMTKKTDP SGLSKTIICHVEGF PKPAIQWTITGSGSVINQTEES PYINGRYYSKIIISPEENVTLTCTAENQLERTVNSLNVSAISIP E HDEADEISDEN REKVNDQA
Source	Mammalian cell
Target Names	ALCAM
Expression Region	28-526aa
Notes	Repeated freezing and thawing is not recommended. Store working aliquots at 4? for up to one week.
Tag Info	C-terminal mFc2a-tagged
Mol. Weight	85.3 kDa
Protein Length	Partial
Image	



(Tris-Glycine gel) Discontinuous SDS-PAGE (reduced) with 5% enrichment gel and 15% separation gel.



Activity
 Measured by its binding ability in a functional ELISA. Immobilized Human CD6 (CSB-MP326953HU) at 2 μ g/ml can bind Human ALCAM. The EC_{50} is 1.049-1.226 ng/mL.

Endotoxin

Less than 1.0 EU/ug as determined by LAL method.

Reconstitution

We recommend that this vial be briefly centrifuged prior to opening to bring the contents to the bottom. Please reconstitute protein in deionized sterile water to a concentration of 0.1-1.0 mg/mL. We recommend to add 5-50% of glycerol (final concentration) and aliquot for long-term storage at -20°C/-80°C. Our default final concentration of glycerol is 50%. Customers could use it as reference.

Shelf Life

The shelf life is related to many factors, storage state, buffer ingredients, storage temperature and the stability of the protein itself.

Generally, the shelf life of liquid form is 6 months at -20°C/-80°C. The shelf life of lyophilized form is 12 months at -20°C/-80°C.