



Recombinant Human Interleukin-10 receptor subunit alpha (IL10RA)-VLPs (Active)

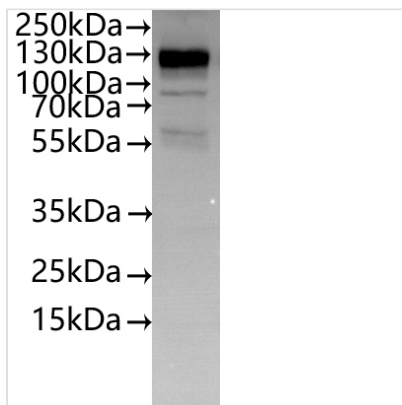
Product Code	CSB-MP621688HU(A4)
Abbreviation	Recombinant Human IL10RA protein-VLPs (Active)
Storage	The shelf life is related to many factors, storage state, buffer ingredients, storage temperature and the stability of the protein itself. Generally, the shelf life of liquid form is 6 months at -20?/-80?. The shelf life of lyophilized form is 12 months at -20?/-80?.
Uniprot No.	Q13651
Form	Lyophilized powder
Storage Buffer	Lyophilized from a 0.2 μm sterile filtered PBS, 6% Trehalose, pH 7.4
Product Type	Recombinant Protein
Immunogen Species	Homo sapiens (Human)
Biological Activity	①Measured by its binding ability in a functional ELISA. Immobilized Human IL10RA at 2 μg/mL can bind Human IL10 (CSB-MP011580HU) . The EC50 is 2.897-3.185 ng/mL.The VLPs (CSB-MP3838) is negative control. ②Human IL10 (CSB-MP011580HU) captured on Protein A Chip can bind Recombinant Human IL10RA with an affinity constant of 85.8 pM as detected by MetaSPR Assay (WeSPRTM 200).
Purity	/
Sequence	HGTELPSPPSVWFEEAFFHHILHWTPIPNQSESTCYEVALLRYGIESWNSISNC SQTLSYDLTAVTLDLYHSNGYRARVRAVDGSRHSNWTVTNTRFSVDEVTLTV GSVNLEIHNGFILGKIQLPRPKMAPANDTYESIFSHFREYEIAIRKVPGNFTFTHK KVKHENFSLTSGEVGFCVQVKPSVASRSNKGMSKEECISLTRQYFTVTN VIIFFAFVLLLSGALAYCLALQLYVRRRKKLPSVLLFKKPSPFIFISQRSPETQD TIHPLDEEAFLKVSPKLNLDLHGSTDGSGFKPSLQTEEPQFLLPDPHPQAD RTLGNREPPVLGDSCSSGSSNSTDSGICLQEPSLSPSTGPTWEQQVGSNSRG QDDSGIDLQNSEGRAGDTQGGGALGHHSPPEPEVPGEEDPAAVAFQGYLR QTRCAEEKATKTGCLEESPLTDGLGPKFGRCLVDEAGLHPPALAKGYLKQD PLEMTLASSGAPTQWNQPTTEWSLLALSSCSDLGISDWSFAHDLAPLGCVA APGGLLGSFNSDLVTLPLISSLQSSE
Source	Mammalian cell
Target Names	IL10RA
Expression Region	22-578aa
Notes	The VLPs are expressed from human 293 cells (HEK293).Mix the sample gently by repeatedly pipetting it up and down. Do not vortex.Repeated freezing and thawing is not recommended.Store the protein at -20?/-80? upon receiving it, and ensure to avoid repeated freezing and thawing, otherwise, it will affect the protein activity. The immunization strategy should be optimized (antigen dose,



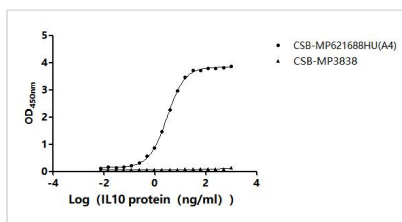
regimen and adjuvant).

Tag Info	C-terminal 10xHis-tagged
Mol. Weight	62.2 kDa
Protein Length	Full Length of Mature Protein

Image

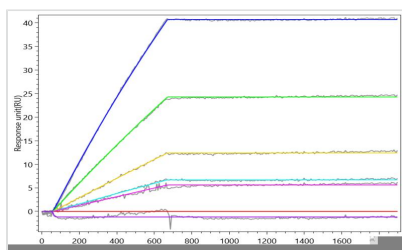


CSB-MP621688HU(A4) is detected by Mouse anti-6*His monoclonal antibody



Activity

Measured by its binding ability in a functional ELISA. Immobilized Human IL10RA at 2 µg/ml can bind Human IL10 (CSB-MP011580HU). The EC₅₀ is 2.897-3.185 ng/mL. The VLPs (CSB-MP3838) is negative control.



Activity

Human IL10 (CSB-MP011580HU) captured on Protein A Chip can bind Recombinant Human IL10RA with an affinity constant of 85.8 pM as detected by MetaSPR Assay (WeSPRTM 200).

Endotoxin Less than 1.0 EU/ug as determined by LAL method.

Reconstitution We recommend that this vial be briefly centrifuged prior to opening to bring the contents to the bottom. Please reconstitute protein in deionized sterile water to a concentration of 0.1-1.0 mg/mL. We recommend to add 5-50% of glycerol (final concentration) and aliquot for long-term storage at -20°C/-80°C. Our default final concentration of glycerol is 50%. Customers could use it as reference.

Shelf Life The shelf life is related to many factors, storage state, buffer ingredients, storage temperature and the stability of the protein itself. Generally, the shelf life of liquid form is 6 months at -20°C/-80°C. The shelf life of lyophilized form is 12 months at -20°C/-80°C.