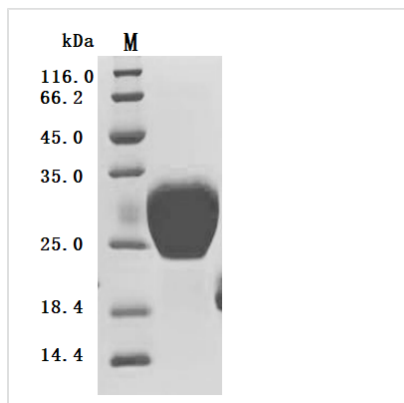


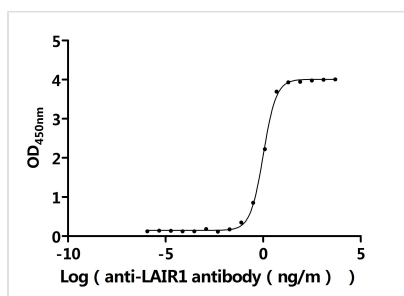


Recombinant Human Leukocyte-associated immunoglobulin-like receptor 1 (LAIR1), partial (Active)

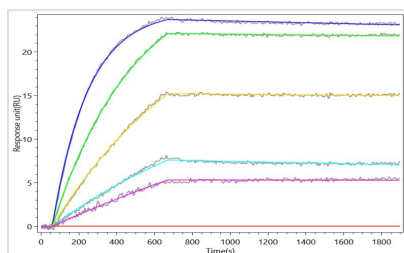
Product Code	CSB-MP012721HU
Abbreviation	Recombinant Human LAIR1 protein, partial (Active)
Storage	The shelf life is related to many factors, storage state, buffer ingredients, storage temperature and the stability of the protein itself. Generally, the shelf life of liquid form is 6 months at -20?/-80?. The shelf life of lyophilized form is 12 months at -20?/-80?.
Uniprot No.	Q6GTX8
Form	Lyophilized powder
Storage Buffer	Lyophilized from a 0.2 µm sterile filtered PBS, 6% Trehalose, pH 7.4
Product Type	Recombinant Protein
Immunogen Species	Homo sapiens (Human)
Biological Activity	①Measured by its binding ability in a functional ELISA. Immobilized Human LAIR1 at 2 µg/mL can bind Anti-LAIR1 recombinant antibody (CSB-RA012721MA2HU). The EC50 is 0.9493-1.090 ng/mL. ②LAIR1 Recombinant Monoclonal Antibody (CSB-RA012721MA2HU) captured on Protein A Chip can bind Recombinant Human LAIR1 with an affinity constant of 0.329 nM as detected by MetaSPR Assay (WeSPRTM 200).
Purity	≥ 95% as determined by SDS-PAGE. ≥ 95% as determined by SEC-HPLC.
Sequence	QEEDLPRPSISAEPGTVIPLGSHVTFVCRGPVGVQTFRLERDSRSTYNDTEDV SQASPSESEARFRIDSVREGNAGLYRCIYYKPPKWSEQSDYLELLVKESSGGP DSPDTEPGSSAGPTQRPSDNSHNEHAPASQGLKAEH
Source	Mammalian cell
Target Names	LAIR1
Expression Region	22-163aa
Notes	Repeated freezing and thawing is not recommended. Store working aliquots at 4? for up to one week.
Tag Info	C-terminal 10xHis-tagged
Mol. Weight	16.9 kDa
Protein Length	Partial
Image	



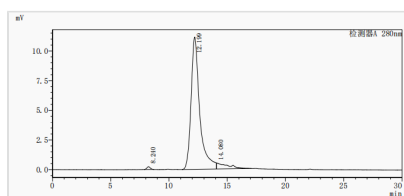
(Tris-Glycine gel) Discontinuous SDS-PAGE (reduced) with 5% enrichment gel and 15% separation gel.



Activity
Measured by its binding ability in a functional ELISA. Immobilized Human LAIR1 at 2 $\mu\text{g/ml}$ can bind Anti-LAIR1 recombinant antibody (CSB-RA012721MA2HU). The EC_{50} is 0.9493-1.090 ng/mL .



Activity
LAIR1 Recombinant Monoclonal Antibody (CSB-RA012721MA2HU) captured on Protein A Chip can bind Recombinant Human LAIR1 with an affinity constant of 0.329 nM as detected by MetaSPR Assay (WeSPRTM 200).



The purity of LAIR1 was greater than 95% as determined by SEC-HPLC

Endotoxin

Less than 1.0 EU/ug as determined by LAL method.

Reconstitution

We recommend that this vial be briefly centrifuged prior to opening to bring the contents to the bottom. Please reconstitute protein in deionized sterile water to a concentration of 0.1-1.0 mg/mL . We recommend to add 5-50% of glycerol (final concentration) and aliquot for long-term storage at $-20^{\circ}\text{C}/-80^{\circ}\text{C}$. Our default final concentration of glycerol is 50%. Customers could use it as reference.

Shelf Life

The shelf life is related to many factors, storage state, buffer ingredients, storage temperature and the stability of the protein itself. Generally, the shelf life of liquid form is 6 months at $-20^{\circ}\text{C}/-80^{\circ}\text{C}$. The shelf life of lyophilized form is 12 months at $-20^{\circ}\text{C}/-80^{\circ}\text{C}$.