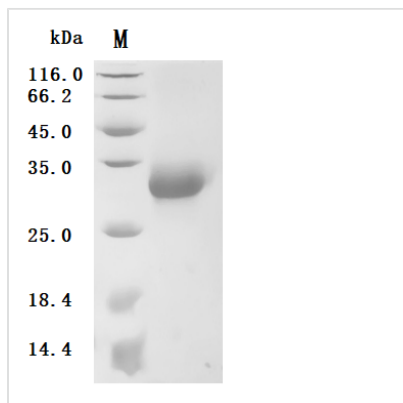


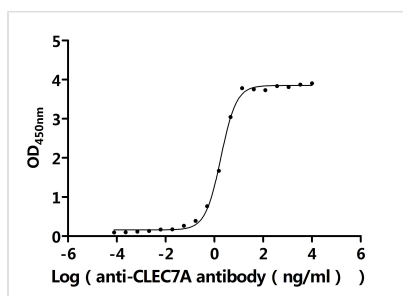


Recombinant Human C-type lectin domain family 7 member A (CLEC7A), partial (Active)

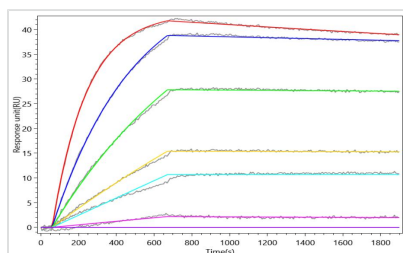
Product Code	CSB-MP883623HU
Abbreviation	Recombinant Human CLEC7A protein, partial (Active)
Storage	The shelf life is related to many factors, storage state, buffer ingredients, storage temperature and the stability of the protein itself. Generally, the shelf life of liquid form is 6 months at -20?/-80?. The shelf life of lyophilized form is 12 months at -20?/-80?.
Uniprot No.	Q9BXN2
Form	Lyophilized powder
Storage Buffer	Lyophilized from a 0.2 μm sterile filtered PBS, 6% Trehalose, pH 7.4
Product Type	Recombinant Protein
Immunogen Species	Homo sapiens (Human)
Biological Activity	①Measured by its binding ability in a functional ELISA. Immobilized Human CLEC7A at 2 μg/mL can bind Anti-CLEC7A recombinant antibody (CSB-RA883623MA1HU). The EC50 is 1.715-1.991 ng/mL. ②CLEC7A Recombinant Monoclonal Antibody (CSB-RA883623MA1HU) captured on Protein A Chip can bind Recombinant Human CLEC7A with an affinity constant of 0.807 nM as detected by MetaSPR Assay (WeSPRTM 200).
Purity	≥ 95% as determined by SDS-PAGE.
Sequence	TMAIWRSNSGSNTLENGYFLSRNKENHSQPTQSSLEDSVTPTKAVKTTGVLSS PCPPNWIIYEKSCYLFSMSLNSWDGSKRQCWQLGSLNLLKIDSSNELGFIVKQV SSQPDNSFWIGLSRPQTEVPWLWEDGSTFSSNLFQIRTTATQENPSPNCVWI HVSVIYDQLCSVPSYSICEKKFSM
Source	Mammalian cell
Target Names	CLEC7A
Expression Region	66-247aa
Notes	Repeated freezing and thawing is not recommended. Store working aliquots at 4? for up to one week.
Tag Info	N-terminal 10xHis-tagged
Mol. Weight	23.3 kDa
Protein Length	Partial
Image	



(Tris-Glycine gel) Discontinuous SDS-PAGE (reduced) with 5% enrichment gel and 15% separation gel.



Activity
 Measured by its binding ability in a functional ELISA. Immobilized Human CLEC7A at 2 µg/ml can bind Anti-CLEC7A recombinant antibody (CSB-RA883623MA1HU). The EC₅₀ is 1.715-1.991 ng/mL.



Activity
 CLEC7A Recombinant Monoclonal Antibody (CSB-RA883623MA1HU) captured on Protein A Chip can bind Recombinant Human CLEC7A with an affinity constant of 0.807 nM as detected by MetaSPR Assay (WeSPRTM 200).

Endotoxin

Less than 1.0 EU/ug as determined by LAL method.

Reconstitution

We recommend that this vial be briefly centrifuged prior to opening to bring the contents to the bottom. Please reconstitute protein in deionized sterile water to a concentration of 0.1-1.0 mg/mL. We recommend to add 5-50% of glycerol (final concentration) and aliquot for long-term storage at -20°C/-80°C. Our default final concentration of glycerol is 50%. Customers could use it as reference.

Shelf Life

The shelf life is related to many factors, storage state, buffer ingredients, storage temperature and the stability of the protein itself. Generally, the shelf life of liquid form is 6 months at -20°C/-80°C. The shelf life of lyophilized form is 12 months at -20°C/-80°C.