



Recombinant Human ATP-dependent 6-phosphofructokinase, platelet type (PFKP)

Product Code	CSB-EP017823HU
Abbreviation	Recombinant Human PFKP protein
Storage	The shelf life is related to many factors, storage state, buffer ingredients, storage temperature and the stability of the protein itself. Generally, the shelf life of liquid form is 6 months at -20?/-80?. The shelf life of lyophilized form is 12 months at -20?/-80?.
Uniprot No.	Q01813
Form	Liquid or Lyophilized powder
Storage Buffer	If the delivery form is liquid, the default storage buffer is Tris/PBS-based buffer, 5%-50% glycerol. If the delivery form is lyophilized powder, the buffer before lyophilization is Tris/PBS-based buffer, 6% Trehalose, pH 8.0.
Product Type	Recombinant protein
Immunogen Species	Homo sapiens (Human)
Sensitivity	Not Test
Purity	≥ 85% as determined by SDS-PAGE.
Sequence	MDADDSRAPKGSRLRKFLEHLSGAGKAIGVLTSSGGDAQGMNAAVRVVRMGIY VGAKVYFIYEGYQGMVDGGSNIAEADWESVSSILQVGGTIIGSARCQAFRTRE GRLKAACNLLQRGITNLCVIGGDGSLTGANLFRKEWSSLLEELARNGQIDKEA VQKYAYLNVVGMVGSIDNDFCGTDMTIGTDSALHRIIEVVDAIMTTAQSHQRTF VLEVMGRHCGYLALVSALACGADWVFLPESPPEEGWEEQMCVKLSENARK KRLNIIIVAEGAIDTQNKIPITSEKIKELVVTQLGYDTRVTILGHVQRGGTPSAFDRI LASRMGVEAVIALLEATPDTPACVSLNNGHAVRLPLMECVQMTQDVQKAMD ERRFQDAVRLRGRSFAGNLNTYKRLAIKLPDDQIPKTNVAVINVGAPAAGM NAAVRSVAVRGIADGHRMLAIYDGFDFGFAKQIKEIGWTDVGGWTGQGGGSIL GTKRVLPKYLEEIIATQMRTHSINALLIIGGFAYLGLLELSAAREKHFEFCVPM VMVPATVSNVPGSDFSIGADTALNTITDTCDRIKQSASGTRRRVFIETMGGY CGYLANMGGLAAGADAAYIFEEPDIRDLQSNVEHLTEKMKTIIQRGLVLRNE SCSENYTTDFIYQLYSEEGKGVFDCRKNVLGHMQGGGAPSPFDRNFGTKISA RAMEWITAKLKEARGRGGKFTTDDSIKVLGISKRNVIQPVAVELKKQTD FEHRI PKEQWWLKLRLMKILAKYKASYDVSDSGQLEHVQPWSV
Research Area	Metabolism
Source	E.coli
Target Names	PFKP
Expression Region	1-784aa
Notes	Repeated freezing and thawing is not recommended. Store working aliquots at 4? for up to one week.

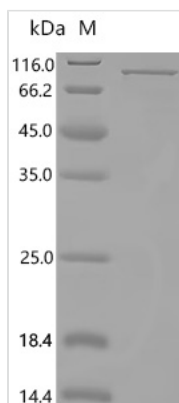


Tag Info C-terminal 6xHis-tagged

Mol. Weight 92.5 kDa

Protein Length Full Length

Image



(Tris-Glycine gel) Discontinuous SDS-PAGE (reduced) with 5% enrichment gel and 15% separation gel.

Reconstitution

We recommend that this vial be briefly centrifuged prior to opening to bring the contents to the bottom. Please reconstitute protein in deionized sterile water to a concentration of 0.1-1.0 mg/mL. We recommend to add 5-50% of glycerol (final concentration) and aliquot for long-term storage at -20°C/-80°C. Our default final concentration of glycerol is 50%. Customers could use it as reference.

Shelf Life

The shelf life is related to many factors, storage state, buffer ingredients, storage temperature and the stability of the protein itself.

Generally, the shelf life of liquid form is 6 months at -20°C/-80°C. The shelf life of lyophilized form is 12 months at -20°C/-80°C.