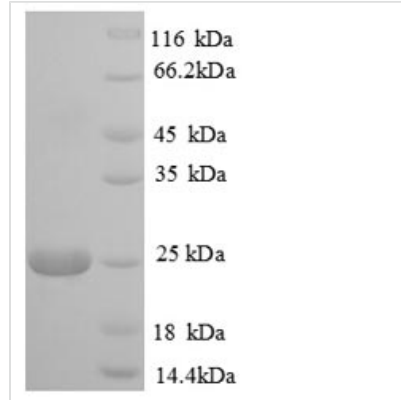




Recombinant Bovine Polymeric immunoglobulin receptor (PIGR), partial

Product Code	CSB-EP017981BO
Relevance	This receptor binds polymeric IgA and IgM at the basolateral surface of epithelial cells. The complex is then transported across the cell to be secreted at the apical surface. During this process a cleavage occurs that separates the Extracellular domain (known as the secretory component) from the transmembrane segment.
Abbreviation	Recombinant Bovine PIGR protein, partial
Storage	The shelf life is related to many factors, storage state, buffer ingredients, storage temperature and the stability of the protein itself. Generally, the shelf life of liquid form is 6 months at -20°C/-80°C. The shelf life of lyophilized form is 12 months at -20°C/-80°C.
Uniprot No.	P81265
Product Type	Recombinant Protein
Immunogen Species	Bos taurus (Bovine)
Purity	Greater than 90% as determined by SDS-PAGE.
Sequence	SRGLIKEQYEGRLALLTEPGNGTYTVILNQLTDQDTGFYWCVTGDGTRWISTV ELKVVQGEPSLKVPKNVTAWLGEPLKLSCHFPCFYSEKYWCKWSNRGCS ALPTQNDGPSQAFVSCDQNSQVVSLNLDLTVTKEDGWWYWCGVKEGPRYGET AAVYVAVESRVKGSQGAQVKAAPAGAAIQSRAGEIQNKALLDPS
Research Area	Others
Source	E.coli
Target Names	PIGR
Expression Region	400-599aa
Notes	Repeated freezing and thawing is not recommended. Store working aliquots at 4°C for up to one week.
Tag Info	N-terminal 6xHis-tagged
Mol. Weight	26.0kDa
Protein Length	Partial
Image	



(Tris-Glycine gel) Discontinuous SDS-PAGE (reduced) with 5% enrichment gel and 15% separation gel.

Reconstitution

We recommend that this vial be briefly centrifuged prior to opening to bring the contents to the bottom. Please reconstitute protein in deionized sterile water to a concentration of 0.1-1.0 mg/mL. We recommend to add 5-50% of glycerol (final concentration) and aliquot for long-term storage at -20°C/-80°C. Our default final concentration of glycerol is 50%. Customers could use it as reference.

Shelf Life

The shelf life is related to many factors, storage state, buffer ingredients, storage temperature and the stability of the protein itself. Generally, the shelf life of liquid form is 6 months at -20°C/-80°C. The shelf life of lyophilized form is 12 months at -20°C/-80°C.