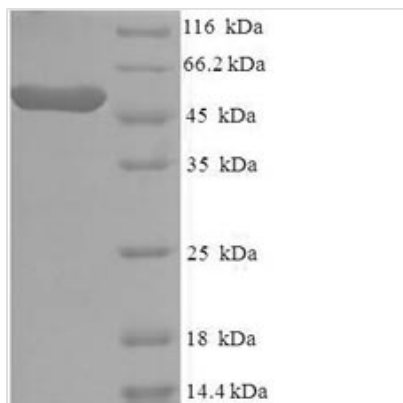




# Recombinant Human Casein kinase I isoform epsilon (CSNK1E)

|                          |   |
|--------------------------|---|
| <b>Product Code</b>      | CSB-EP006068HU  |
| <b>Relevance</b>         | Casein kinases are operationally defined by their preferential utilization of acidic proteins such as caseins as substrates. Can phosphorylate a large number of proteins. Participates in Wnt signaling. Phosphorylates DVL1. Central component of the circadian clock. In balance with PP1, determines the circadian period length, through the regulation of the speed and rhythmicity of PER1 and PER2 phosphorylation. Controls PER1 and PER2 nuclear transport and degradation. Inhibits cytokine-induced granulocytic differentiation. |
| <b>Abbreviation</b>      | Recombinant Human CSNK1E protein  |
| <b>Storage</b>           | The shelf life is related to many factors, storage state, buffer ingredients, storage temperature and the stability of the protein itself. Generally, the shelf life of liquid form is 6 months at -20°C/-80°C. The shelf life of lyophilized form is 12 months at -20°C/-80°C.   |
| <b>Uniprot No.</b>       | P49674  |
| <b>Product Type</b>      | Recombinant Protein   |
| <b>Immunogen Species</b> | Homo sapiens (Human)  |
| <b>Purity</b>            | ≥ 90% as determined by SDS-PAGE.  |
| <b>Sequence</b>          | MELRVGNKYRLGRKIGSGSFGDIYLGANIASGEEVAIKLECVKTKHPQLHIESKF<br>YKMMQGGVIGIPSIKWCGAEGDYNVMVMELLGPSLEDLFNFCSRKFSLKTVLLL<br>ADQMISRIEYIHSKNFIHRDVKPDNFLMGLGKKNLVYIIDFGLAKKYRDARTHQ<br>HIPYRENKNLTGTARYASINHLGIEQSRRDDLESGLYVLMYFNLGSLPWQGL<br>KAATKRQKYERISEKKMSTPIEVLCKGYPSEFSTYLNFCRSLRFDDKPDYSYLR<br>QLFRNLFHRQGFSDYVFDWNMLKFGAARNPEDVDREHEREERMGQLR<br>GSATRALPPGPPTGATANRLRSAAEPVASTPASRIQPAGNTSPRAISRVDRE<br>KVSMRLHRGAPANVSSSDLTGRQEVSRIQASQTSVDFDHLGK  |
| <b>Research Area</b>     | Signal Transduction   |
| <b>Source</b>            | E.coli  |
| <b>Target Names</b>      | CSNK1E  |
| <b>Expression Region</b> | 1-416aa   |
| <b>Notes</b>             | Repeated freezing and thawing is not recommended. Store working aliquots at 4°C for up to one week.   |
| <b>Tag Info</b>          | N-terminal 6xHis-tagged   |
| <b>Mol. Weight</b>       | 51.3kDa   |
| <b>Protein Length</b>    | Full Length   |
| <b>Image</b>             |   |



(Tris-Glycine gel) Discontinuous SDS-PAGE (reduced) with 5% enrichment gel and 15% separation gel.

### Reconstitution

We recommend that this vial be briefly centrifuged prior to opening to bring the contents to the bottom. Please reconstitute protein in deionized sterile water to a concentration of 0.1-1.0 mg/mL. We recommend to add 5-50% of glycerol (final concentration) and aliquot for long-term storage at -20°C/-80°C. Our default final concentration of glycerol is 50%. Customers could use it as reference.

### Shelf Life

The shelf life is related to many factors, storage state, buffer ingredients, storage temperature and the stability of the protein itself. Generally, the shelf life of liquid form is 6 months at -20°C/-80°C. The shelf life of lyophilized form is 12 months at -20°C/-80°C.