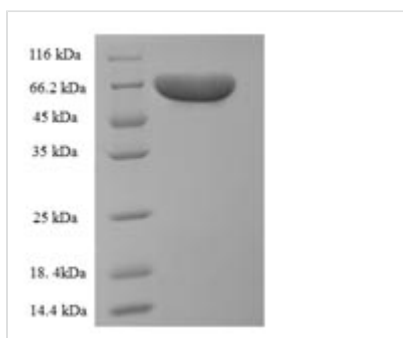




Recombinant Rat Pyruvate kinase isozymes R/L (Pklr)

Product Code	CSB-EP018071RA
Relevance	Plays a key role in glycolysis.
Abbreviation	Recombinant Rat Pklr protein
Storage	The shelf life is related to many factors, storage state, buffer ingredients, storage temperature and the stability of the protein itself. Generally, the shelf life of liquid form is 6 months at -20°C/-80°C. The shelf life of lyophilized form is 12 months at -20°C/-80°C.
Uniprot No.	P12928
Alias	L-PKPyruvate kinase isozymes L/R
Product Type	Recombinant Protein
Immunogen Species	Rattus norvegicus (Rat)
Purity	≥ 90% as determined by SDS-PAGE.
Sequence	MSVQENTLPQQLWPWIFRSQKDLAKSALSGAPGGPAGYLRRASVAQLTQELG TAFFQQQQLPAAMADTFLEHLCLLDIDSQPVAARSTSIATIGPASRSVDRLKEM IKAGMNIARLNFSHGSHEYHAESIANIREATESFATSPLSYRPVAIALDTKGPEIR TGVLQGGPESEVEIVKGSQVLVTPDKFQTRGDAKTWVDYHNITRVVAVGG RIYIDDGLISLVVQKIGPEGLVTEVEHGGILGSRKGVNLPNTEVDLPLGLSEQDLL DLRFGVQHNVDIIFASFVRKASDVLAVRDALGPEGQNIKIISKIENHEGVKKFDEI LEVSDGIMVARGDLGIEIPA EKVF LAQKMMIGRCNLAGKPVVCATQMLES MITK ARPTRAETS DVANAVLDGADCIMLSGETAKGSFPVEAVMMQHAIAREAEAAVY HRQLFEELRRAAPLSRDPTEVTAIGAVEASFKCCAAAIIVLTKTGRSAQLLSQY RPRAAVIAVTRSAQAARQVHLSRGVFPLLYREPPEAIWADDVDRRVQFGIESG KLRGFLRVGDLVIVVTGWRPGSGYTNIMRVLSVS
Research Area	Others
Source	E.coli
Target Names	Pklr
Protein Names	Recommended name: Pyruvate kinase isozymes R/L EC= 2.7.1.40 Alternative name(s): L-PK
Expression Region	1-574aa
Notes	Repeated freezing and thawing is not recommended. Store working aliquots at 4°C for up to one week.
Tag Info	N-terminal 6xHis-tagged
Mol. Weight	66.2kDa
Protein Length	Full Length
Image	



(Tris-Glycine gel) Discontinuous SDS-PAGE (reduced) with 5% enrichment gel and 15% separation gel.

Reconstitution

We recommend that this vial be briefly centrifuged prior to opening to bring the contents to the bottom. Please reconstitute protein in deionized sterile water to a concentration of 0.1-1.0 mg/mL. We recommend to add 5-50% of glycerol (final concentration) and aliquot for long-term storage at -20°C/-80°C. Our default final concentration of glycerol is 50%. Customers could use it as reference.

Shelf Life

The shelf life is related to many factors, storage state, buffer ingredients, storage temperature and the stability of the protein itself.

Generally, the shelf life of liquid form is 6 months at -20°C/-80°C. The shelf life of lyophilized form is 12 months at -20°C/-80°C.