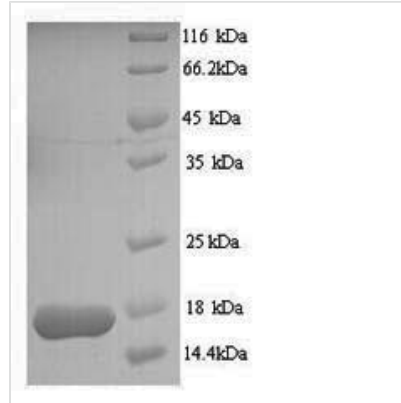




Recombinant Entamoeba histolytica Multidrug resistance protein 1 (MDR1)

Product Code	CSB-YP001046EKM
Relevance	Energy-dependent efflux pump responsible for decreased drug accumulation in multidrug-resistant cells.
Abbreviation	Recombinant Entamoeba histolytica MDR1 protein
Storage	The shelf life is related to many factors, storage state, buffer ingredients, storage temperature and the stability of the protein itself. Generally, the shelf life of liquid form is 6 months at -20°C/-80°C. The shelf life of lyophilized form is 12 months at -20°C/-80°C.
Uniprot No.	P16875
Alias	P-glycoprotein
Product Type	Recombinant Protein
Immunogen Species	Entamoeba histolytica
Purity	≥ 90% as determined by SDS-PAGE.
Sequence	SGCGKSTTIQLIQRNYEPNGGRVTLDGKDIRELNIKWLRNQIGLVGQEPVLFAG TIRENIMLGAKEGETLSKDEMIECAKMANAHEFVSKLAEGYDTLIGEKGALLSG GQRQRI
Research Area	Others
Source	Yeast
Target Names	MDR1
Protein Names	Recommended name: Multidrug resistance protein 1 Alternative name(s): P-glycoprotein
Expression Region	1-114aa
Notes	Repeated freezing and thawing is not recommended. Store working aliquots at 4°C for up to one week.
Tag Info	N-terminal 6xHis-tagged
Mol. Weight	14.5kDa
Protein Length	Full Length
Image	



(Tris-Glycine gel) Discontinuous SDS-PAGE (reduced) with 5% enrichment gel and 15% separation gel.

Reconstitution

We recommend that this vial be briefly centrifuged prior to opening to bring the contents to the bottom. Please reconstitute protein in deionized sterile water to a concentration of 0.1-1.0 mg/mL. We recommend to add 5-50% of glycerol (final concentration) and aliquot for long-term storage at $-20^{\circ}\text{C}/-80^{\circ}\text{C}$. Our default final concentration of glycerol is 50%. Customers could use it as reference.

Shelf Life

The shelf life is related to many factors, storage state, buffer ingredients, storage temperature and the stability of the protein itself. Generally, the shelf life of liquid form is 6 months at $-20^{\circ}\text{C}/-80^{\circ}\text{C}$. The shelf life of lyophilized form is 12 months at $-20^{\circ}\text{C}/-80^{\circ}\text{C}$.