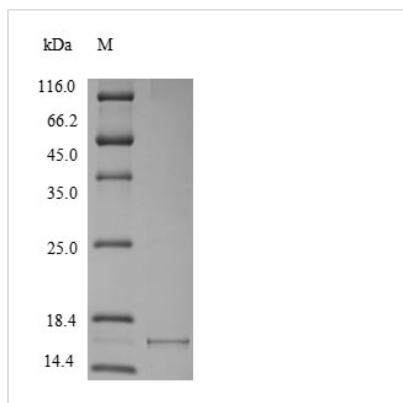




# Recombinant *Macaca fascicularis* Alpha-synuclein (SNCA)

|                          |   |
|--------------------------|---|
| <b>Product Code</b>      | CSB-YP021912MOV   |
| <b>Relevance</b>         | May be involved in the regulation of dopamine release and transport.  |
| <b>Abbreviation</b>      | Recombinant Cynomolgus monkey SNCA protein  |
| <b>Storage</b>           | The shelf life is related to many factors, storage state, buffer ingredients, storage temperature and the stability of the protein itself. Generally, the shelf life of liquid form is 6 months at -20°C/-80°C. The shelf life of lyophilized form is 12 months at -20°C/-80°C. |
| <b>Uniprot No.</b>       | P61142  |
| <b>Product Type</b>      | Recombinant Protein   |
| <b>Immunogen Species</b> | <i>Macaca fascicularis</i> (Crab-eating macaque) (Cynomolgus monkey)  |
| <b>Purity</b>            | ≥ 90% as determined by SDS-PAGE.  |
| <b>Sequence</b>          | MDVFMKGLSKAKEGVVAAAEKTKQGVAEAAAGKTKEGVLYVGSKTKEGVVHG<br>VATVAEKTKEQVTNVGGAVVTGVTAVAQKTVEGAGSIAAATGFIKKDQLGKNE<br>EGAPQEGILQDMPVDPDNEAYEMPSEEGYQDYEPEA   |
| <b>Research Area</b>     | Others  |
| <b>Source</b>            | Yeast   |
| <b>Target Names</b>      | SNCA  |
| <b>Protein Names</b>     | Recommended name: Alpha-synuclein   |
| <b>Expression Region</b> | 1-140aa   |
| <b>Notes</b>             | Repeated freezing and thawing is not recommended. Store working aliquots at 4°C for up to one week.   |
| <b>Tag Info</b>          | N-terminal 6xHis-tagged   |
| <b>Mol. Weight</b>       | 16.5kDa   |
| <b>Protein Length</b>    | Full Length   |

## Image



(Tris-Glycine gel) Discontinuous SDS-PAGE (reduced) with 5% enrichment gel and 15% separation gel.



---

**Reconstitution**

We recommend that this vial be briefly centrifuged prior to opening to bring the contents to the bottom. Please reconstitute protein in deionized sterile water to a concentration of 0.1-1.0 mg/mL. We recommend to add 5-50% of glycerol (final concentration) and aliquot for long-term storage at -20°C/-80°C. Our default final concentration of glycerol is 50%. Customers could use it as reference.

---

**Shelf Life**

The shelf life is related to many factors, storage state, buffer ingredients, storage temperature and the stability of the protein itself.

Generally, the shelf life of liquid form is 6 months at -20°C/-80°C. The shelf life of lyophilized form is 12 months at -20°C/-80°C.