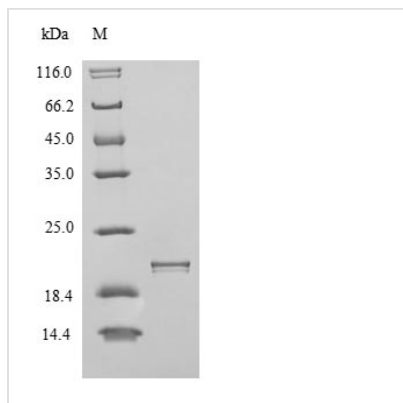




# Recombinant Human Integrin alpha-V (ITGAV), partial

<b>Product Code</b>	CSB-YP011877HU
<b>Relevance</b>	The alpha-V (ITGAV) integrins are receptors for vitronectin, cytotactin, fibronectin, fibrinogen, laminin, matrix metalloproteinase-2, osteopontin, osteomodulin, prothrombin, thrombospondin and vWF. They recognize the sequence R-G-D in a wide array of ligands. In case of HIV-1 infection, the interaction with Extracellular domain viral Tat protein ses to enhance angiogenesis in Kaposi's sarcoma lesions.
<b>Abbreviation</b>	Recombinant Human ITGAV protein, partial
<b>Storage</b>	The shelf life is related to many factors, storage state, buffer ingredients, storage temperature and the stability of the protein itself. Generally, the shelf life of liquid form is 6 months at -20°C/-80°C. The shelf life of lyophilized form is 12 months at -20°C/-80°C.
<b>Uniprot No.</b>	P06756
<b>Alias</b>	Vitronectin receptor subunit alpha; CD51
<b>Product Type</b>	Recombinant Protein
<b>Immunogen Species</b>	Homo sapiens (Human)
<b>Purity</b>	≥ 90% as determined by SDS-PAGE.
<b>Sequence</b>	DLALSEGDIHTLGCQVAQCLKIVCQVGRDRGKSAILYVKSLWTFMKNEN QNHSLKSSASFNIEFPYKNLPIEDITNSTLVTTNVTWGIQPAPMPVPVWVII LAVLAGLLLLAVLVFVMYRMGFFKRVRPPQEEQEREQLQPHENGEENSET
<b>Research Area</b>	Cardiovascular
<b>Source</b>	Yeast
<b>Target Names</b>	ITGAV
<b>Protein Names</b>	Recommended name: Integrin alpha-V Alternative name(s): Vitronectin receptor subunit alpha CD_antigen= CD51 Cleaved into the following 2 chains: 1. Integrin alpha-V heavy chain 2. Integrin alpha-V light chain
<b>Expression Region</b>	891-1048aa
<b>Notes</b>	Repeated freezing and thawing is not recommended. Store working aliquots at 4°C for up to one week.
<b>Tag Info</b>	N-terminal 6xHis-tagged
<b>Mol. Weight</b>	19.7kDa
<b>Protein Length</b>	Partial
<b>Image</b>	



(Tris-Glycine gel) Discontinuous SDS-PAGE (reduced) with 5% enrichment gel and 15% separation gel.

### Reconstitution

We recommend that this vial be briefly centrifuged prior to opening to bring the contents to the bottom. Please reconstitute protein in deionized sterile water to a concentration of 0.1-1.0 mg/mL. We recommend to add 5-50% of glycerol (final concentration) and aliquot for long-term storage at  $-20^{\circ}\text{C}/-80^{\circ}\text{C}$ . Our default final concentration of glycerol is 50%. Customers could use it as reference.

### Shelf Life

The shelf life is related to many factors, storage state, buffer ingredients, storage temperature and the stability of the protein itself. Generally, the shelf life of liquid form is 6 months at  $-20^{\circ}\text{C}/-80^{\circ}\text{C}$ . The shelf life of lyophilized form is 12 months at  $-20^{\circ}\text{C}/-80^{\circ}\text{C}$ .