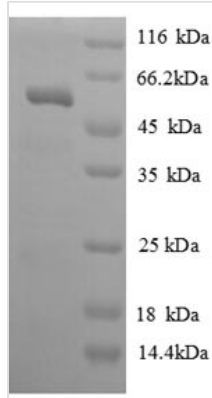




# Recombinant Human Kallikrein-7 (KLK7), partial

<b>Product Code</b>	CSB-EP012458HU
<b>Relevance</b>	May catalyze the degradation of intercellular cohesive structures in the cornified layer of the skin in the continuous shedding of cells from the skin surface. Specific for amino acid residues with aromatic side chains in the P1 position. Cleaves insulin A chain at '14-Tyr- -Gln-15' and insulin B chain at '6-Leu- -Cys-7', '16-Tyr- -Leu-17', '25-Phe- -Tyr-26' and '26-Tyr- -Thr-27'. Could play a role in the activation of precursors to inflammatory cytokines.
<b>Abbreviation</b>	Recombinant Human KLK7 protein, partial
<b>Storage</b>	The shelf life is related to many factors, storage state, buffer ingredients, storage temperature and the stability of the protein itself. Generally, the shelf life of liquid form is 6 months at -20°C/-80°C. The shelf life of lyophilized form is 12 months at -20°C/-80°C.
<b>Uniprot No.</b>	P49862
<b>Alias</b>	Serine protease 6Stratum corneum chymotryptic enzyme ;hSCCE
<b>Product Type</b>	Recombinant Protein
<b>Immunogen Species</b>	Homo sapiens (Human)
<b>Purity</b>	Greater than 90% as determined by SDS-PAGE.
<b>Sequence</b>	DKIIDGAPCARGSHPWQVALLSGNQLHCGGVLVNERWVLTAAHCKMNEYTVH LGSDTLGDRRAQRIKASKSFRHPGYSTQTHVNDLMLVLKLSQARLSSMVKKV RLPSRCEPPGTTCTVSGWGTSTTSPDVTFPSDLMCVDVKLISPQDCTKVYKDLL ENSMLCAGIPDSKKNACNGDSGGPLVCRGTLQGLVSWGTFPCGQPNDPGVY TQVCKFTKWINDTMKKHR
<b>Research Area</b>	Cancer
<b>Source</b>	E.coli
<b>Target Names</b>	KLK7
<b>Expression Region</b>	28-253aa
<b>Notes</b>	Repeated freezing and thawing is not recommended. Store working aliquots at 4°C for up to one week.
<b>Tag Info</b>	N-terminal GST-tagged
<b>Mol. Weight</b>	51.7kDa
<b>Protein Length</b>	Partial
<b>Image</b>	



(Tris-Glycine gel) Discontinuous SDS-PAGE (reduced) with 5% enrichment gel and 15% separation gel.

### Reconstitution

We recommend that this vial be briefly centrifuged prior to opening to bring the contents to the bottom. Please reconstitute protein in deionized sterile water to a concentration of 0.1-1.0 mg/mL. We recommend to add 5-50% of glycerol (final concentration) and aliquot for long-term storage at -20°C/-80°C. Our default final concentration of glycerol is 50%. Customers could use it as reference.

### Shelf Life

The shelf life is related to many factors, storage state, buffer ingredients, storage temperature and the stability of the protein itself. Generally, the shelf life of liquid form is 6 months at -20°C/-80°C. The shelf life of lyophilized form is 12 months at -20°C/-80°C.